



Chefmaster LED Insect Control Unit

Instruction Manual

Model

HEG580 - LED Insect control unit (100m² coverage)

HEG581 - LED Insect control unit (150m² coverage)

Thank you for purchasing your Chefmaster LED Insect Control Unit. To make full use of the product please read this manual carefully before using the product and keep it safe for future reference.

Safety Tips

- If you find any damage when the product is unpacked, contact your Chefmaster distributor within 24 hours of receipt of goods
- Repairs should only be carried out by a qualified technician
- High voltage! Do not touch the inner electric grids.
- Do not insert metal objects into the unit.
- Do not submerge in water or any other liquids.
- Do not cover the device while it is using.
- Keep away from flammable materials
- Check the local voltage before operating.
- If damaged, supply cords must be repaired or replaced by a qualified technician.
- This insect control unit cannot be used in a garage, stable or similar places.
- Please unplug the unit from the power source before commencing cleaning and maintenance.
- The appliance can be used by children aged from 8 years and above and persons with reduced physical, sensory or mental capabilities or lack of experience and knowledge if they have been given supervision or instruction concerning use of the appliance in a safe way and understand the hazards involved. Children shall not play with the appliance.

Pack Contents

- 1 x Chefmaster LED Insect Control unit
- 1 x Wall mounting accessories

Positioning and usage guidance

- Insect activity will be higher at night. For best results, place unit away from other competing light sources to ensure the catch rate.
- Install at least 1m away from where food will be prepared or presented.
- Keep away from flammable liquids or gases. **DANGER OF EXPLOSION.**
- The unit should be positioned in between potential entry points, in order to intercept flying insects before they reach sensitive areas.
- The unit should not be sited either too high or too low in the area to be protected, with an optimum height of around 2m.
- Position away from flammable objects like curtains, lace curtains etc.

Operation

WARNING! Under no circumstances should hands be placed anywhere near the high voltage grid when the appliance is operational.

- Plug unit into suitable UK 13amp plug socket.
- Turn the switch to the "ON" position.
- The light will come on and the grid will become electrically charged.
- If you do not use the appliance for an extended period, disconnect it from the electrical socket.

Cleaning & Maintenance

WARNING! Switch off the appliance, disconnect it from the power supply and wait at least 2 minutes for the electrical load to be discharged

WARNING! Never attempt to remove the guard during cleaning or maintenance.

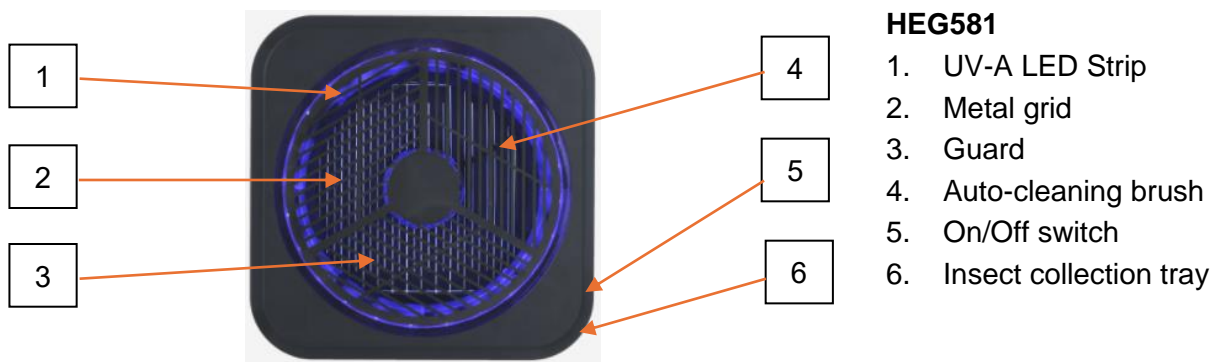
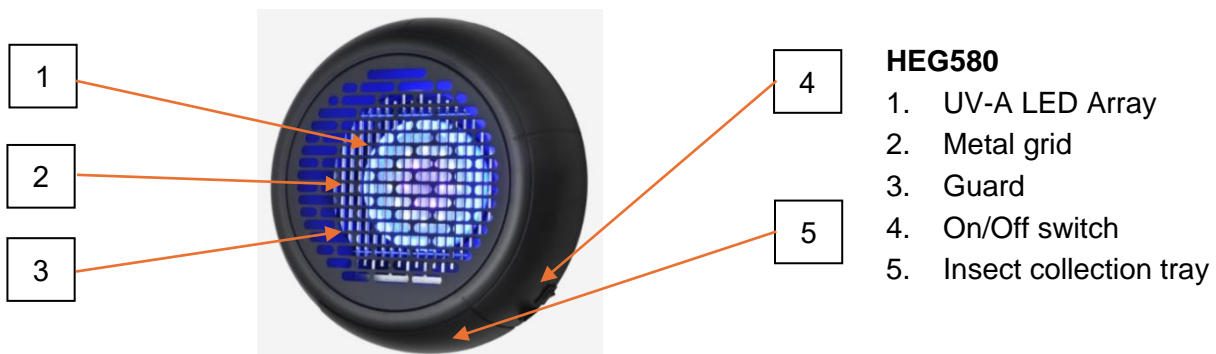
NOTE: Clean the appliance regularly to maintain a good and safe working condition.

- Empty the insect collecting container at least once a week.
- Clean the outside of the appliance with a damp cloth (water with mild detergent).
- Never use aggressive cleaning agents or abrasives.
- Do not use any sharp or pointed objects.
- Do not use petrol or solvents.
- Do not use abrasive materials.
- Ensure the unit is completely dry before reconnecting it to the power supply.

Beware: Never expose the appliance to water or any other liquid.

Troubleshooting

Fault	Possible Cause	Solution
Unit is not working	<ul style="list-style-type: none"> - The unit is not switched on - The plug or lead are damaged - No high voltage - The UV-A LED light stop working 	<ul style="list-style-type: none"> - Check unit is plugged in and switched on - Contact your Chefmaster distributor. - Contact your approved service agent. - Replace the UV-A LED.



LED Bulb replacement.

Bulb replacement is to be carried out by a suitably qualified professional.

Disconnect unit from mains power.

Check condition of unit before performing any work.

Use Personal Protective Equipment.

HEG580 - 100m² coverage



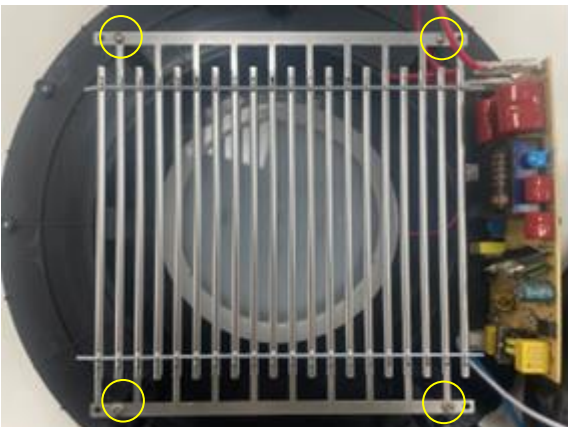
Remove the collection tray.

Place the unit front face down on a suitable level work surface.

Remove thirteen screws.

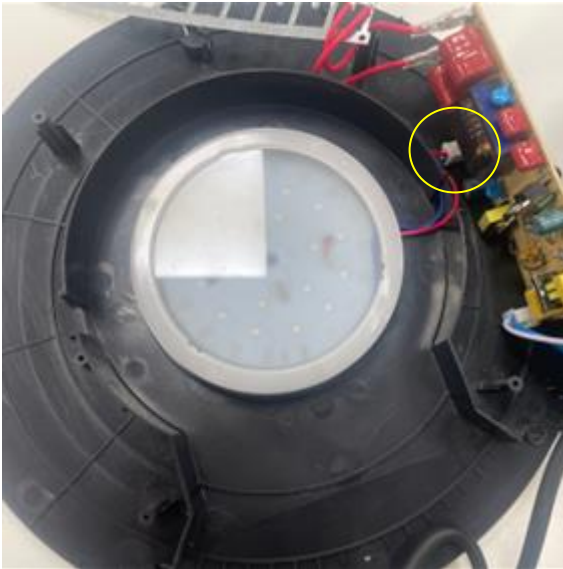


Remove the rear cover. There is sufficient cable length to place the rear cover next to the top cover without disconnecting the terminals.

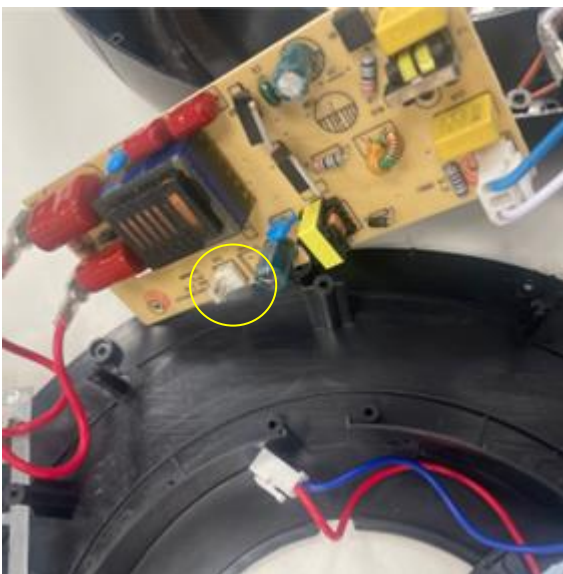
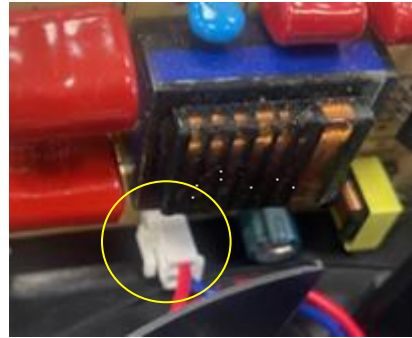


Remove four screws on the grid, remove the grid and place to one side, the cable length is sufficient to allow this.

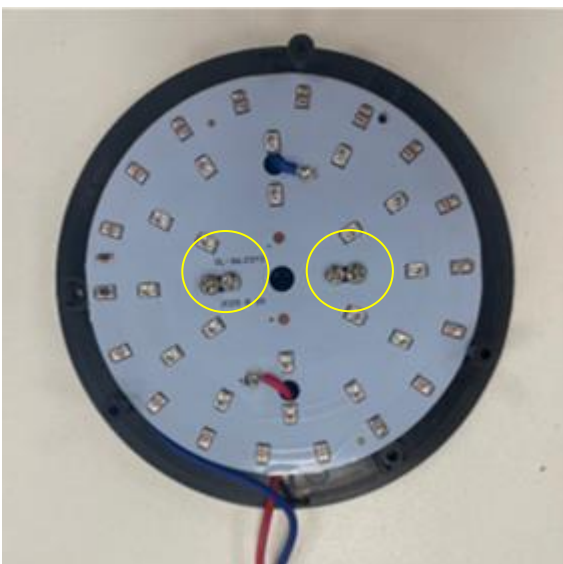
HEG580



Remove the LED diffuser cover.
Locate the LED bulb connector on the PCB.

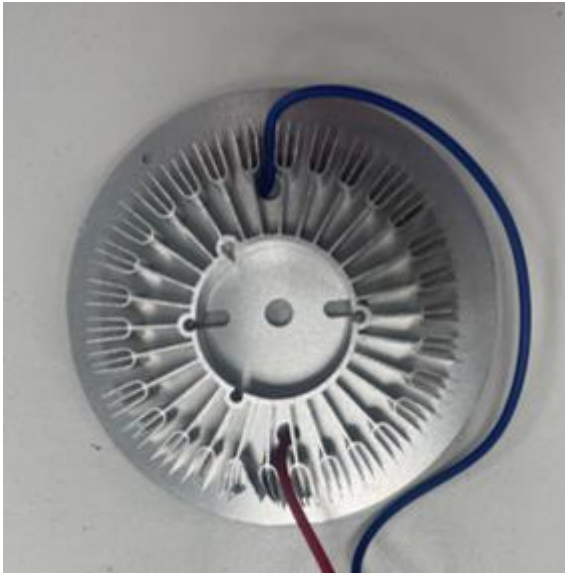


Carefully lift the PCB from the slots on the body.
Remove the LED bulb connector from the PCB



Remove the old LED bulb from the body.
Place the bulb on to the work surface and carefully
remove the four screws.
Turn the bulb over

HEG580



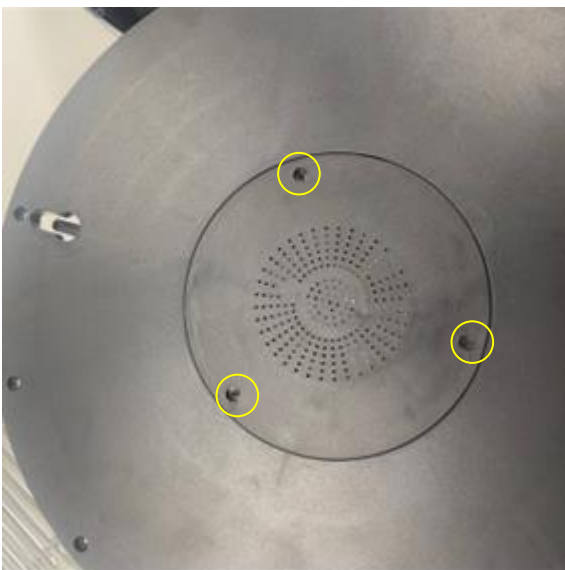
Note the location of the blue & red wires and the orientation of the heat sink on the bulb
Free the wires from the heat sink and remove.

Extra care must be taken not to damage/deform the heat sink during this step.

Dispose of the old LED bulb in accordance with local authority regulations.



Carefully place the heatsink on to the new bulb ensuring correct orientation.
Thread the wires into the heatsink, ensuring they are held in place by the fins.
Turn the bulb over and carefully replace the screws, ensuring that holes align correctly.



Place the bulb assembly on to the body
Place the LED diffuser on top, correctly orientated.
Carefully turn the unit over and replace the three screws in the centre to secure the bulb and diffuser assembly.
Carefully turn the unit over.
Reconnect the LED bulb connector to the PCB
Place the PCB back into the slots on the body.

HEG580



Place the grid on to the screw raisers.
Replace the four screws.
Check everything is seated correctly.



Replace the top cover carefully.
Ensure that no cables are snagged and that the
power switch aligns and seated correctly.
Replace the thirteen screws
Restore the collection tray



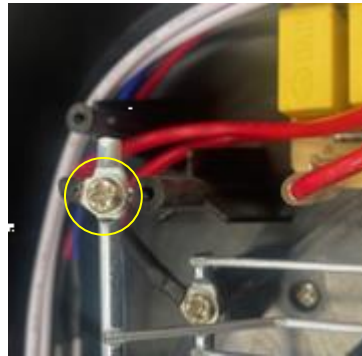
HEG581 – 150m² coverage



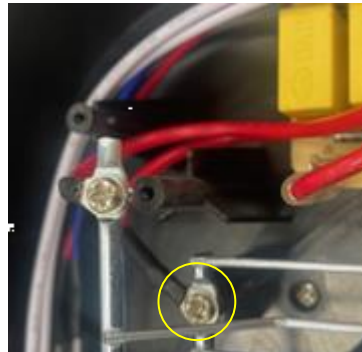
Remove the collection tray.
Place the unit front face down on a suitable level work surface.
Remove seven screws.



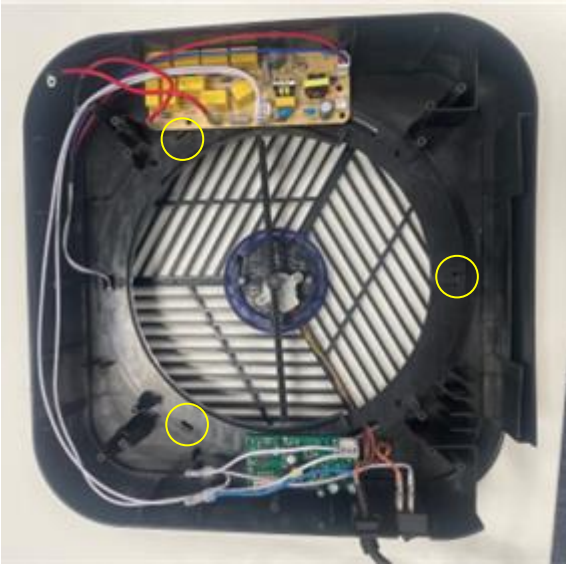
Place the cover to one side.
Remove the four screws securing the upper grid in place
Note. One screw has a wiring terminal attached.



Remove upper grid and place to one side.
Remove the four screws securing the lower grid in place.
Note. One screw has a wiring terminal attached.



HEG581



Remove the lower grid and place to one side.

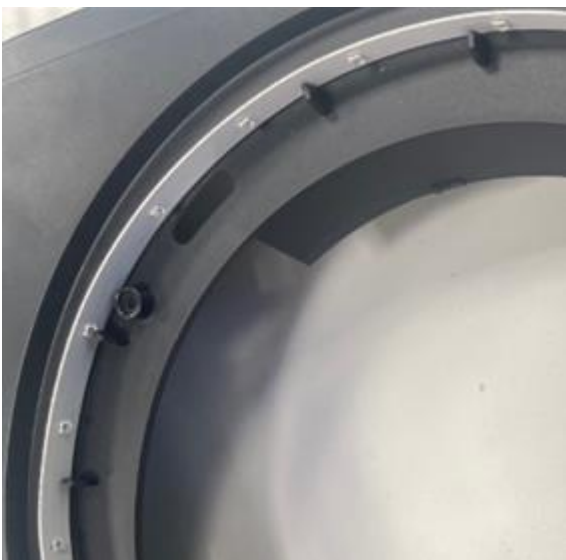
Using a plastic tool, gently push the tabs to release the diffuser from the body of the unit



Carefully turn the unit over

Disconnect the LED strip connector from the wiring terminal.

Remove the LED strip light and dispose of in accordance with local authority regulations.



Install the replacement LED strip. Ensure that the strip sits behind the upstands and seated correctly. Connect the LED strip light connector to the wire. Carefully refit the diffuser assembly, ensure it is aligned correctly and flat to the body.



HEG581



Turn the unit over.

Place the bottom grid on to the body upstands and ensure the holes are aligned.

Place the wiring terminal onto the grid and align.

Replace four screws, ensure terminal is secure.

Place the top grid on to the body upstands and ensure the holes are aligned.

Place the wiring terminal onto the grid and align.

Replace four screws, ensure the terminal is secure.



Carefully replace the rear cover ensuring it is flat, square and correctly aligned.

Ensure that no cables are snagged and that the power switch aligns and seated correctly.

Replace the seven screws.

Restore the collection tray.

When the unit is powered, check that the integrated grid cleaning brush is functioning (it will rotate in a clockwise and counter-clockwise direction periodically)



Transportation and Storage

Please handle your LED Insect Control unit with care to prevent any damage to the unit and internal parts. The LED Insect Control unit should be stored somewhere which is well ventilated. Do not store any flammable objects near the equipment.

Technical Information

HEG580 LED INSECT CONTROL UNIT UPTO 100M2 COVERAGE

Voltage 220V~240V, 50/60Hz

Power: 6W

Weight: 1.08kgs

Dimensions: 302mm x 302mm x 72mm

HEG581 LED INSECT CONTROL UNIT UPTO 150M2 COVERAGE

Voltage 220V~240V, 50/60Hz

Power: 12W

Weight: 1.44kgs

Dimensions: 318mm x 318mm x 64mm

- Chefmaster LED insect control are supplied with a 3 pin plug and lead with a 13 amp fuse
- Appliance must be earthed
- If in doubt contact a qualified electrician or your Chefmaster distributor

Disposal



Under WEEE regulations this product must not be disposed of as household waste. To prevent damage to the environment and humans this product must be disposed of in an approved and environmentally friendly recycling process. For more information on how to dispose of this correctly please contact your Chefmaster distributor or local authority responsible for waste disposal.

Compliance



All Chefmaster parts and products have undergone a stringent testing process to ensure that comply with all European standards and specifications.

All Chefmaster products carry the CE approval symbol.