

CATERING EQUIPMENT FOR EDUCATION



NEW FOR 2024/25

EDUCATION BROCHURE

WELCOME

Welcome to the new Education Sector brochure from Lockhart Catering Equipment.

As the UK's leading distributor of catering equipment and with years of experience working with education establishments, we are well-versed in the challenges of running kitchens and providing a positive meal experience in schools, colleges and universities. We have spoken to many customers from the sector to better understand their catering equipment needs to ensure their front- and back-of-house operations are running as efficiently and smoothly as possible.

This has enabled us to put together a brochure for the Education sector that offers tailored catering equipment solutions to suit different types of educational establishments.

HOW DOES THE BROCHURE WORK?

In this brochure, you will find specific catering equipment products to suit every service offered by Nurseries, Schools, Colleges and Universities. It also covers special services, such as Banqueting, Conferences and Meetings, provided by many educational establishments.

Simply click the relevant panel to go to our website, where you will find a wide range of products to choose from within your chosen category. With a comprehensive selection of innovative and high-quality catering equipment products, this brochure is an essential guide for any educational establishment looking to provide a positive dining experience at meal times.



CONTENTS

NURSERIES & PRIMARY SCHOOLS 05-08

<i>Breakfast Club</i>	06
<i>Lunch</i>	07
<i>Cool Stuff</i>	08

SECONDARY SCHOOLS 09-10

<i>Lunch</i>	10
--------------	----

UNIVERSITIES & COLLEGES 11-18

<i>All Day Dining</i>	12
<i>Bars</i>	13
<i>Banqueting & Conference</i>	14-15
<i>Meeting Rooms</i>	16
<i>Accommodation</i>	17-18

EVERYDAY SERVICE 19-27

<i>Hot & Cold Counter Service</i>	20-21
<i>Display & Service</i>	22
<i>Hydration Stations</i>	23
<i>Storage & Preparation</i>	24
<i>Catering Appliances & Refrigeration</i>	25
<i>Clothing</i>	26
<i>Bespoke Services</i>	27

SUSTAINABILITY AT LOCKHART 28-30



NURSERIES & PRIMARY SCHOOLS



In this category, you will find catering equipment products to meet the nuances of running a nursery or primary school food service. Whether you're looking for polycarbonate plates, bowls and jugs for breakfast and lunch settings or unbreakable, lightweight trays on which to serve food, you will find all the essentials to suit your specific needs.



SECONDARY SCHOOLS



In this section, you will find a varied range of tableware, glassware, cutlery and essential items such as meal trays all suitable for secondary school settings. Clicking each panel will give you a wide range of products from a variety of brands, providing the right solution for breaktime dining requirements.



UNIVERSITIES & COLLEGES



From dining halls and bar areas to banqueting and meeting rooms, University dining must be responsive & efficient to offer the full spectrum of services required. This section offers you the flexibility to choose products for all your different service requirements, including essentials for student accommodation services.



EVERYDAY SERVICE



This section includes the other essential products that are required for running front-of-house and back-of-house kitchen operations in educational establishments. A wide range of products for Hot and cold counter services, Display services, Hydration stations, Food preparation, Refrigeration and Clothing items for chefs are included.



NURSERIES & PRIMARY SCHOOLS

Breakfast Club

06

Lunch

07

Cool Stuff

08



NURSERIES & PRIMARY SCHOOLS

BREAKFAST CLUB

CEREAL BOWLS & PLATES



SHOP NOW

MIRAGE - CARNIVAL



SHOP NOW

HARFIELD - BOWLS

DRINKWARE



HARFIELD CUPS & JUGS

ESSENTIALS



SHOP NOW

HARFIELD - DISPLAY



SHOP NOW

STORAGE CONTAINERS



SHOP NOW

CHEFMASTER - TOASTERS



SHOP NOW

TROLLEYS



SHOP NOW

MILK DISPENSERS

BREAKFAST

BEST SELLERS

- CF347 - Small clear reusable dessert pot with 150ml capacity. Qty 1
- D7786BL - Harfield Polycarbonate Blue Round Narrow Rim Bowl 17.3cm 400ml 14oz. Qty 1
- DE241CL - Harfield Polycarbonate Clear Round Multipot 450ml 16.6oz. Qty 10
- BC012 - Mirage Carnival Melamine Round Cereal Bowl 15cm 6 Inch. Qty 1

- D7796CL - Harfield Polycarbonate Clear Jug 1.1Litre. Qty 1
- DE283ACL - Harfield Antibacterial Polycarbonate Clear Jug 1.1Litre. Qty 1
- DF341Y - Harfield Polycarbonate Yellow Handled Cup 220ml. Qty 1
- HEA129 - Connecta Self Assembly 3-Tier Service Trolley. Qty 1

- HEA130 - Connecta Self Assembly Gastronorm Trolley - 20 Tier. Qty 1
- EC876 - Araven Large Food Storage Container With Lid 40ltr. Qty 1
- E1001 - Araven Polypropylene Airtight Container Gastronorm 1/127.5ltr. Qty 1

LUNCH

TABLEWARE & CUTLERY



SHOP NOW

MIRAGE - PLATES



SHOP NOW

HARFIELD - CUTLERY



SHOP NOW

HARFIELD - PLATES

STAINLESS STEEL CUTLERY



SHOP NOW

SIGNATURE - NEW ERA



SHOP NOW

CHILDREN'S CUTLERY

DRINKWARE



SHOP NOW

HARFIELD - TUMBLERS



SHOP NOW

HARFIELD JUGS & LIDS

FOOD SERVICE TRAYS



SHOP NOW

MEAL TRAYS

LUNCH

BEST SELLERS

- D7781W - Harfield Polycarbonate White Round Plate 23cm, Qty 1
- D7811SQ - Harfield Duo Polycarbonate White Round Plate 23cm, Qty 1
- AB708 - Signature Steel New Era 18/0 Stainless Steel Infants Knife, Qty 12
- AB709 - Signature Steel New Era 18/0 Stainless Steel Infants Fork, Qty 12

- DE279BL - Harfield Polycarbonate Blue Fluted Tumbler 7oz, Qty 1
- D6550 - Harfield Antibacterial Polycarbonate Clear Fluted Tumbler 20cl 7oz, Qty 1
- AB710 - Signature Steel New Era 18/0 Stainless Steel Infants Spoon, Qty 12
- D2947 - Cambro Fast Food Plastic Navy Blue Rectangular Tray 45x35cm, Qty 1

- D7799Y - Harfield Yellow 4 Compartment Large Meal Tray 38x28cm, Qty 1
- DE276BL - Harfield Polycarbonate Knife Standard Blue 22cm, Qty 1
- DE281BL - Harfield Polycarbonate Fork Standard Blue 20cm, Qty 10
- DE280BL - Harfield Polycarbonate Dessert Spoon Standard Blue 20cm, Qty 10

COOL STUFF

PLAYTIME



PLAY DESK

TROLLEYS



7-BOWL SALAD TROLLEY



SERVING BAR TROLLEY



TRIANGLE SET ACCESSORY



TRIANGLE SET WITH SLIDE UP



FOLD AWAY SALAD STATION



SALAD BAR WITH A TWIST

SECONDARY SCHOOLS

Lunch

10

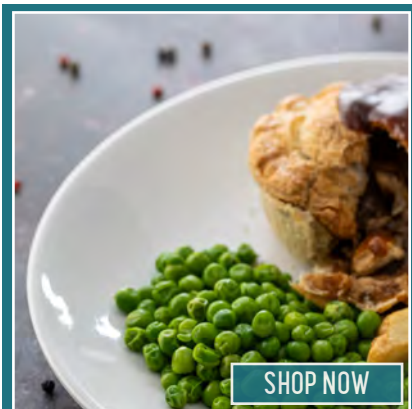


SECONDARY SCHOOLS

SCHOOL DINING - LUNCH

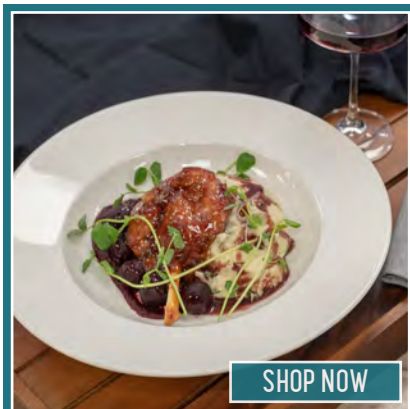


TABLEWARE



SHOP NOW

SUPERWHITE



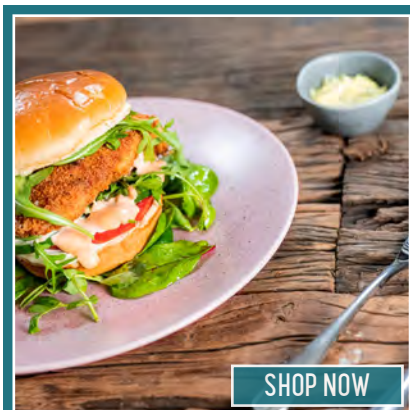
SHOP NOW

CREME - MONET



SHOP NOW

CHURCHILL - ALCHEMY



SHOP NOW

ARTISAN STONEWARE

CUTLERY



SHOP NOW

AMEFA - OXFORD



SHOP NOW

SIGNATURE - 18/0

GLASSWARE



SHOP NOW

GLACIAL ECO UTAH



SHOP NOW

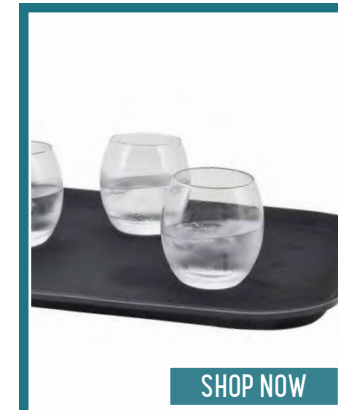
DURALEX PICARDIE

TRAYS



SHOP NOW

CAFETERIA TRAYS



SHOP NOW

NON-SLIP TRAYS

LUNCH

BEST SELLERS

D9673 - Churchill Alchemy Buffet Clear Rectangular Tray Cover 53x32.5cm, Qty 1
 BH552 - Superwhite Porcelain Oatmeal Bowl 16cm 38cl 13.5oz, Qty 6
 BH746 - Creme Monet Vitrified Porcelain White Round Rim Plate 27cm, Qty 12
 BH532 - Superwhite Porcelain Round Winged Plate 26cm, Qty 6

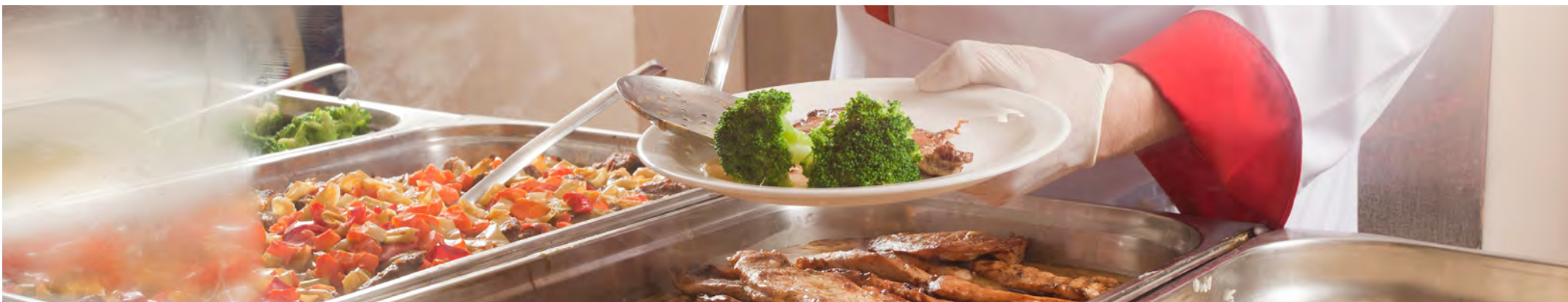
BH569 - Superwhite Porcelain Mug 34cl 12oz, Qty 12
 DD193 - Churchill Alchemy Buffet Melamine White Rectangular Tray 53x32.5cm, Qty 2
 BL207 - Artisan Elm Vitrified Stoneware Green Round Stacking Plate 26cm, Qty 6
 AE185 - Amefa Premiere Oxford 18/10 Stainless Steel Dessert Knife, Qty 12

AE186 - Amefa Premiere Oxford 18/10 Stainless Steel Dessert Fork, Qty 12
 AE187 - Amefa Premiere Oxford 18/10 Stainless Steel Dessert Spoon, Qty 12
 RO196 - Arcoroc Norvege Toughened Glass Stacking Tumbler 20cl, Qty 72



UNIVERSITIES & COLLEGES

<i>All day Dining</i>	12
<i>Bars</i>	13
<i>Banqueting & Conference</i>	14-15
<i>Meeting Rooms</i>	16
<i>Accommodation</i>	17-18





ALL DAY DINING

TABLEWARE



SHOP NOW

ARTISAN - ANDROMEDA



SHOP NOW

STEELITE - AURORA



SHOP NOW

STEELITE - CRAFT



SHOP NOW

CHURCHILL - PROFILE

CUTLERY



SHOP NOW

SIGNATURE - CAROLINE



SHOP NOW

TWENTYEIGHT - SIGMA



SHOP NOW

ELIA - ZEPHYR

GLASSWARE



SHOP NOW

UTOPIA - CENTRA

ALL DAY DINING

BEST SELLERS

BB451 - Churchill Vitrified Porcelain White Round Oatmeal Bowl 17cm 25.6cl 9oz. Qty 1
 BP136EM - Steelite Vitrified Porcelain Emerald Round Stacking Plate 20.25cm. Qty 12
 BB445 - Churchill Profile Vitrified Porcelain White Round Plate 23.4cm. Qty 1

BL108 - Artisan Andromeda Vitrified Stoneware Round Black Mini Bowl 10cm. Qty 6
 BM561 - Artisan Andromeda Vitrified Stoneware Black Round Chip Pot 14oz. Qty 6
 A9006 - Elia Zephyr 18/10 Stainless Steel Teaspoon, Qty 12

A9005 - Elia Zephyr 18/10 Stainless Steel Table Knife, Qty 12
 A9001 - Elia Zephyr 18/10 Stainless Steel Table Fork, Qty 12
 C9197 - Centra Tumbler 10oz. Qty 1





BARS

GLASSWARE



SHOP NOW

GLACIAL ECO



SHOP NOW

GLACIAL



SHOP NOW

POLYCARBONATE TUMBLERS

JUGS AND TRAYS



SHOP NOW

ARC - JUGS



SHOP NOW

TRAYS

ESSENTIAL EQUIPMENT



SHOP NOW

BAR ACCESSORIES

BARS

BEST SELLERS

- DE279BL - Harfield Polycarbonate Blue Fluted Tumbler 7oz. Qty 1
- DD853TO - Harfield Polycarbonate Translucent Orange Tumbler 7oz. Qty 10
- C9151 - Plasma Argon Polycarbonate Tumbler 27cl / 9oz. Qty 1
- CF360 - Penthouse Polycarbonate 9oz Tumbler, Qty 1
- DH083 - Clear Plastic Champagne / Wine Bucket Small, Qty 1

- CC777 - Plasma Argon Polycarbonate 12oz Hiball Ce 1/2 Pint, Qty 48
- CC394 - Glacial Rila Wine 25cl / 8.75oz, Qty 24
- CE712 - Chef & Sommelier Cabernet Tulip Wine Glass 12.5oz, Qty 12
- CC409 - Glacial Summit Beverage 29cl / 10.25oz, Qty 24
- DC888 - Dome Garnish Dispenser 4 Section 6.6ltr, Qty 1

- CC402 - Glacial Maya Wine 32cl / 11.25oz, Qty 24
- D3045 - Service Tray Black Round 28cm Non-Slip, Qty 1
- RO234 - Arcoroc Tivoli Glass Jug 4pt Ice Lipped, Qty 1
- CF973 - Arcoroc Spring Jug with Glass Lid 1ltr, Qty 6
- D3090 - Service Tray Black Round 35.5cm Non-Slip, Qty 1



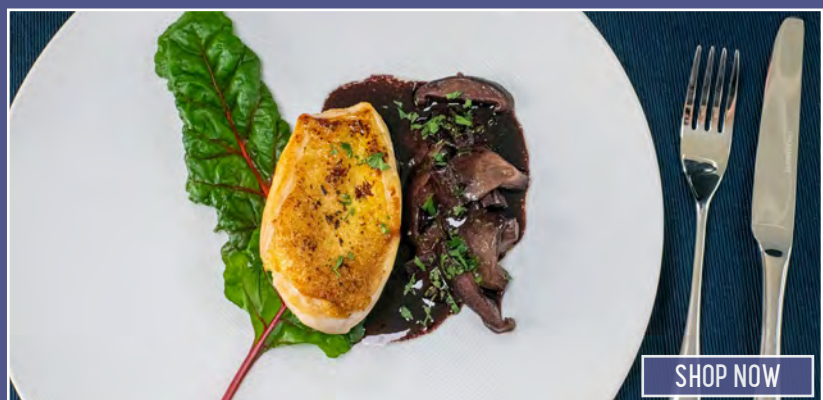


TABLEWARE



SHOP NOW

SUPERWHITE



SHOP NOW

ASTERA - CIRCUIT

BANQUETING & CONFERENCE

BEST SELLERS

- C1312 - Michelangelo Masterpiece Crystal Wine 8oz. Qty 24
- C1988 - Michelangelo Crystal Wine Glass 12oz. Qty 24
- CC540 - Vina Water Glass 13.4oz 39.7cl. Qty 6
- CF627 - Arcoroc Arcadie Tumbler 5.5oz. Qty 24

GLASSWARE



SHOP NOW

LUIGI BORMIOLI



SHOP NOW

SCHOTT ZWIESEL



SHOP NOW

UTOPIA - TIMELESS VINTAGE



SHOP NOW

ARCOROC - ARCADIE



SHOP NOW

GLACIAL - BLUE RIDGE

- CC622 - Glacial Blue Ridge Flute 16cl / 6oz LCE 125ml. Qty 24



UNIVERSITIES & COLLEGES

BANQUETING & CONFERENCE

BUFFET DISPLAY & SERVICE



SHOP NOW

BUFFET STATIONS



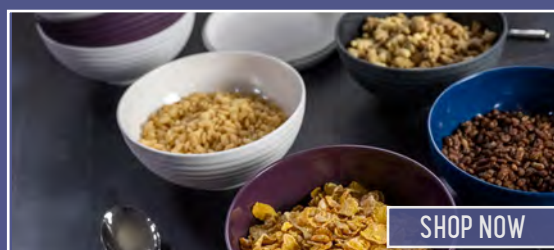
SHOP NOW

DISPLAY PLATTERS



SHOP NOW

RISERS



SHOP NOW

DISPLAY BOWLS



SHOP NOW

BREAD BAGS



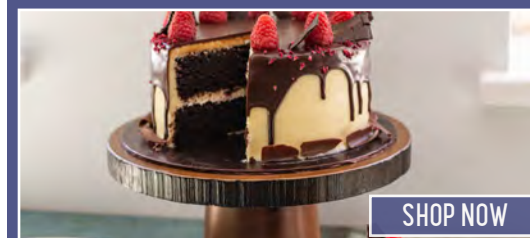
SHOP NOW

TROLLEYS



SHOP NOW

BEVERAGE SERVICE



SHOP NOW

CAKE STANDS

BANQUETING & CONFERENCE

BEST SELLERS

DG359 - Mirage Melamine Black Round Ramen Bowl 22.5x7.5cm 1.45 Litre 51oz, Qty 6
DM150 - D.W. Haber Buffet System Grey Wash Teak Wood 3 Piece Riser 58.4cm, Qty 1
DK054BK - Mirage Savanna Melamine Black Speckle Round Buffet Bowl 39cm, Qty 1
DE407 - Black Melamine Slate Effect 1/1 Tray, Qty 1

DI649 - Mirage Piazza Melamine Grey Square Bowl 19cm 1.8 Litre, Qty 1
DJ806 - Rafters Elevate Round Display Stand 10 inch/25.4cm, Qty 1
DF797 - Glass Cake Stand Cover 29.8 x 19cm, Qty 1
DI908 - Cake Stand with Plastic Cover and Handle, Qty 1

DK599 - Front of the House Coppered Linkâ Risers - Set of 3, Qty 1
DL557BL - Dalebrook Casablanca Melamine Blue Round Platter 35cm, Qty 1
DK576 - Front of the House Twist Riser - Set of 3 - White, Qty 1
DI632 - Mirage Martello Melamine Black Square Bowl 24cm 3 Litre, Qty 1





MEETING ROOMS

TABLEWARE



SHOP NOW

CHURCHILL - ISLA

GLASSWARE



SHOP NOW

ARCOROC - GRANITY

CUTLERY



SHOP NOW

TWENTYEIGHT

BEVERAGE



SHOP NOW

PUMP AIRPOTS

DISPLAY



SHOP NOW

FOH



SHOP NOW

ARIANE - PEEL



SHOP NOW

GLACIAL - TUMBLERS & JUGS



SHOP NOW

AMEFA



SHOP NOW

LEVER AIRPOTS



SHOP NOW

PODIUM

MEETING ROOM

BEST SELLERS

DF142 - Chefmaster Stainless Steel Airpot - Pump Type - 5 Litre - Plain, Qty 1
 DF140 - Chefmaster Stainless Steel Airpot - Pump Type - 2.5 Litre - Plain, Qty 1
 AE185 - Amefa Premiere Oxford 18/10 Stainless Steel Dessert Knife, Qty 12
 AE186 - Amefa Premiere Oxford 18/10 Stainless Steel Dessert Fork, Qty 12

AB966 - Twentyeight Epsilon 18/10 Stainless Steel Dessert Fork, Qty 12
 AB965 - Twentyeight Epsilon 18/10 Stainless Steel Dessert Knife, Qty 12
 BL916 - Churchill Isla Vitrified Porcelain White Round Plate 17cm, Qty 12
 BL921 - Churchill Isla Vitrified Porcelain White Round Bowl 17cm 25.6cl 9oz, Qty 12

BP857 - Astera Peel Vitrified Porcelain White Round Coupe Flat Plate 25cm, Qty 6
 BP850 - Astera Peel Vitrified Porcelain Black Round Coupe Plate 31cm, Qty 4
 C4089 - Arcoroc Granity Tumbler 7oz, Qty 24
 CD839 - Glacial Plain Lip Jug 2.5 Pint / 1.5L, Qty 1





ACCOMMODATION

TABLEWARE



SHOP NOW

SUPERWHITE



SHOP NOW

CHURCHILL - STUDIO PRINTS



SHOP NOW

ARTISAN - PEBBLE

GLASSWARE



SHOP NOW

GLACIAL - SUMMIT



SHOP NOW

UTOPIA - TULIP

CUTLERY



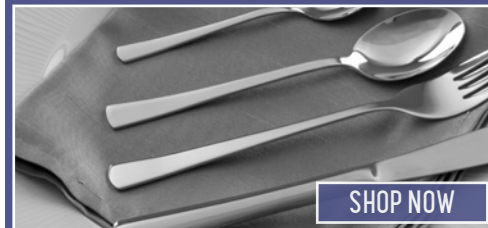
SHOP NOW

SIGNATURE - NEW ERA



SHOP NOW

CANTERBURY



SHOP NOW

SIGNATURE - CAROLINE

PLUG AND PLAY



SHOP NOW

TOASTERS



SHOP NOW

KETTLES



SHOP NOW

REFRIGERATION

ACCOMMODATION

**BEST
SELLERS**

HE7044 - Dualit 60145 6 Slot Vario Toaster - Black, Qty 1
 HE5071 - Chefmaster Conveyor Toaster - 2 Slice Feed, Qty 1
 AD964 - Churchill Vitrified Porcelain Aquamarine Round Coupe Plate 28.8cm, Qty 12
 BI847GY - Artisan Pebble Vitrified Fine China Grey Round Coupe Plate 27cm, Qty 6
 BI865GY - Artisan Pebble Vitrified Fine China Grey Mug 28cl, Qty 6

CC394 - Glacial Rila Wine 25cl / 8.75oz, Qty 1
 CC409 - Glacial Summit Beverage 29cl / 10.25oz, Qty 24
 CC402 - Glacial Maya Wine 32cl / 11.25oz, Qty 24
 AB578 - Signature Style Canterbury 18/0 Stainless Steel Dessert Spoon, Qty 12
 AB576 - Signature Style Canterbury 18/0 Stainless Steel Dessert Knife, Qty 12

AB577 - Signature Style Canterbury 18/0 Stainless Steel Dessert Fork, Qty 12
 AB754 - Signature Steel New Era 18/0 Stainless Steel Table Knife, Qty 12
 AB755 - Signature Steel New Era 18/0 Stainless Steel Table Fork, Qty 12
 HED108 - Arctica Medium Duty Upright Freezer - 580Ltr - Stainless Steel, Qty 1





ACCOMMODATION

COOKWARE & BAKEWARE



SHOP NOW

POTS & PANS



SHOP NOW

BAKING MATS



SHOP NOW

KNIVES & BOARDS



SHOP NOW

SALT & PEPPER MILLS



SHOP NOW

OVEN DISHES



SHOP NOW

NON-STICK BAKEWARE



SHOP NOW

UTENSILS



SHOP NOW

FOOD STORAGE

ACCOMMODATION

**BEST
SELLERS**

EF139 - MasterClass Non-Stick Carbon Steel Rectangular Baking Tray 39x27cm, Qty 1
 ED422 - Prepara 12 Cup Muffin Tin Non Stick 35x26.5x2.8cm, Qty 1
 EH705 - MasterClass Metallic Blue Cast Aluminium Round Dish With Lid 5 Ltr, Qty 1

E9555 - Baking Pan Aluminium 16.5ltr 61x46x7cm, Qty 1
 ED425 - Prepara Loaf Tin 2lb Non Stick 29.5x15x6.2cm, Qty 1
 EC138 - Prepara Chopping Boards Set With Wall Chart And Rack, Qty 1

EC876 - Araven Large Food Storage Container With Lid 40ltr Polypropylene, Qty 1
 E5027 - Cambro Heavy Duty Food Box Clear Polycarbonate 49.2ltr, Qty 1
 D2203 - Cole & Mason Beechwood Salt Mill 16.5cm, Qty 1
 D1827 - Cole & Mason Beechwood Pepper Mill 16.5cm, Qty 1



EVERYDAY SERVICE

<i>Hot & Cold Counter Service</i>	20-21
<i>Display & Service</i>	22
<i>Hydration Stations</i>	23
<i>Storage & Preparation</i>	24
<i>Catering Appliances & Refrigeration</i>	25
<i>Clothing</i>	26
<i>Bespoke Services</i>	27



HOT COUNTER SERVICE

GASTRONORMS



SHOP NOW

EMILE HENRY



SHOP NOW

GALERIE

COOK & SERVE



SHOP NOW

CHURCHILL - STONECAST



SHOP NOW

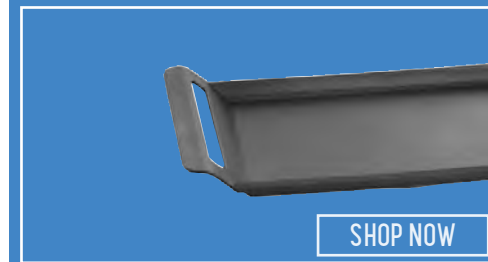
ROASTING DISHES



SHOP NOW

CASSEROLE DISHES

POTS & PANS



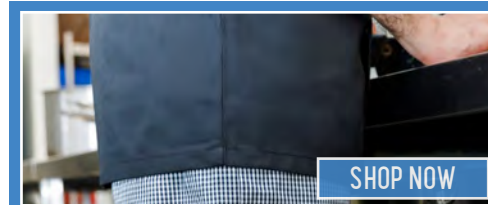
SHOP NOW

TABLECRAFT- PANS



SHOP NOW

DEBUYER - PAELLA PANS



SHOP NOW

PREPARA - FRYING PANS

HEAT LAMPS & HOT TILES CHAFERS & CHAFING FUEL



SHOP NOW

HEAT LAMPS & HOT TILES



SHOP NOW

CHAFING FUELS



SHOP NOW

CHAFERS

HOT COUNTER SERVICE

BEST SELLERS

- D9198 - Hot Tile Glass Black 1/1 Size Gastronorm, Qty 1
- HED492 - Chefmaster Single Warming Lamp - with Stainless Steel Base, Qty 1
- BK027 - Black Tile Gastronorm 1/1 Hot Top 530 x 325mm, Qty 1
- DN002 - Prepara Ethanol Gel Chafing Fuel 2.5 hours, Qty 72
- MO150 - Prepara Fuel Tin With Wick 6 Hours, Qty 24

- MO149 - Prepara Fuel Tin With Wick 4 Hours, Qty 24
- MO123 - Signature Chafing Dish Stainless Steel Oblong 1/16Gastronorm, Qty 1
- ED380 - Prepara Induction Frypan 28cm Non Stick Teflon Plus Coating, Qty 1
- EH084 - Prepara Teflon Profile Non-Stick Fry Pan 20cm Induction, Qty 1
- BK710 - Churchill Vitriified Porcelain Indigo Blue Rectangular Baking Tray 300cl, Qty 2

- BK711 - Churchill Vitriified Porcelain Indigo Blue Rectangular Baking Tray 600cl, Qty 2
- BI343 - Creme Galerie Vitriified Porcelain White Gastronorm Dish 1/165mm Deep, Qty 1
- B6290WH - Emile Henry Gastronorm White Ceramic 1/165mm, Qty 1
- BI347 - Creme Galerie Vitriified Porcelain White Gastronorm Dish 2/4 65mm Deep, Qty 1

COLD COUNTER SERVICE

SERVING BOWLS



SHOP NOW

MIRAGE - SAVANNA

DISPLAY



SHOP NOW

CREATIVE - MARRAKESH SLABS

SERVING BOARDS



SHOP NOW

RAFTERS - GRIP

CRATES



SHOP NOW

RAFTERS - FLOAT



SHOP NOW

MIRAGE - FUSION



SHOP NOW

CHURCHILL



SHOP NOW

KITCHENCRAFT



SHOP NOW

GENWARE

COLD COUNTER SERVICE

BEST SELLERS

BD802 - Churchill Vitrified Porcelain White Square Jug 12x18cm 1.5 Litre, Qty 2
 BB105 - Churchill Vitrified Porcelain White Rectangular 1/1 Gastronorm Tray, Qty 1
 DL3906Y - Grey Moroccan Marrakesh Melamine Round Slab, Qty 1
 DG359 - Mirage Melamine Black Round Ramen Bowl 22.5x7.5cm 1.45 Litre 51oz, Qty 6

DK054BK - Mirage Savanna Melamine Black Speckle Round Buffet Bowl 39cm, Qty 1
 B0837WH - Mirage Fusion Melamine White Round Embossed Bowl 16cm, Qty 6
 B0839WH - Mirage Fusion Melamine White Round Plate/Lid 16cm, Qty 6
 DK268 - Rafters Float Teak Wooden Board 40 x 30 x 5cm, Qty 1

DG437 - Rustic Wooden Display Crate Stand, Qty 1
 D1007 - Rafters Float Display Crate Medium 30 x 21 x 7cm, Qty 1
 DG004 - Rafters Grip Platter Board With Copper Handle, Qty 1
 DE701 - Large Rect Mango Wood Plank 50 x 23 x 1.5cm, Qty 1

DISPLAY & SERVICE

MENU COVERS & BOARDS



[SHOP NOW](#)


SECURIT



[SHOP NOW](#)

GENWARE

CONDIMENTS



[SHOP NOW](#)

SAUCE BOTTLES



[SHOP NOW](#)

SAUCE DISPENSERS

DISPLAY



[SHOP NOW](#)


PODIUM TROLLEY

UTENSILS



[SHOP NOW](#)

PORTIONERS



[SHOP NOW](#)

PREPARA - TONGS

DISPLAY & SERVICE

BEST SELLERS

EA408BK - Prepara Tongs 24cm Stainless Steel Black Non Slip Handle, Qty 1
 EA408YE - Prepara Tongs Stainless Steel 24cm Yellow Non Slip Handle, Qty 1
 E4554 - Vollrath Antibacterial Handle Stainless Steel Scoop Ivory Size 10, Qty 1
 DG431 - Wooden Menu Clipboard A4 24x32x0.6cm, Qty 1

DG772 - Medium Table Chalk Board Wood Black, Qty 1
 DG774 - Mini Tripod Table Chalk Board Wood Black, Qty 1
 D3166 - Sauce Bottle Clear Plastic 100cl, Qty 1
 E2200 - Squeeze Bottle 24oz Clear Narrow Mouth, Qty 1

E2201 - Sauce Bottle Clear Plastic 34cl, Qty 1
 DM802 - Rustic Brown 4 Bin Impulse Merchandise Display Stand, Qty 1
 DM799 - Rustic Brown 2-Tier Adjustable A-Frame Display Stand, Qty 1
 DM800 - Black 2-Tier Adjustable A-Frame Display Stand, Qty 1

HYDRATION STATIONS

DISPENSERS



SHOP NOW

WATER BOILER



SHOP NOW

JUICE DISPENSERS

BEVERAGE SERVICE



SHOP NOW

TEA SERVICE



SHOP NOW

TEA/COFFEE SPOONS



SHOP NOW

PODIUM

HYDRATION STATIONS

BEST SELLERS

- HEF605 - Chefmaster Autofill Water Boiler - 8 Ltr draw-off, Qty 1
- DN441NA - Podium 2 Drawer Natural Oak 2/3 Rectangular Tea Chest, Qty 1
- BN395 - Superwhite Café Porcelain Grey Bowl Shaped Cup 28.5cl 10oz, Qty 1
- BN387 - Superwhite Café Porcelain Sky Blue Bowl Shaped Cup 28.5cl 10oz, Qty 1
- BN391 - Superwhite Café Porcelain Sage Green Bowl Shaped Cup 28.5cl 10oz, Qty 1

- BN398 - Superwhite Café Porcelain White Bowl Shaped Cup 23cl 8oz, Qty 1
- DM272WH - Mirage Strata Melamine Satvario White 1/3 Gastronorm Platter, Qty 1
- DM261 - Chefmaster Stainless Steel Vacuum Beverage Jug, Qty 1
- BN391 - Superwhite Café Porcelain Sage Green Bowl Shaped Cup 28.5cl 10oz, Qty 1
- BN398 - Superwhite Café Porcelain White Bowl Shaped Cup 23cl 8oz, Qty 1

- DM272WH - Mirage Strata Melamine Satvario White 1/3 Gastronorm Platter, Qty 1
- DM261 - Chefmaster Stainless Steel Vacuum Beverage Jug - 1.5 Litre, Qty 1
- DM262 - Chefmaster Stainless Steel Vacuum Beverage Jug - 1.5 Litre, Qty 1
- DM260 - Chefmaster Stainless Steel Vacuum Beverage Jug - 1 Litre, Qty 1
- DN413NA - Podium Long Island Natural Oak Hospitality Trolley, Qty 1

STORAGE & FOOD PREPARATION

FOOD STORAGE



SHOP NOW

CAMBRO CONTAINERS



SHOP NOW

ARAVEN CONTAINERS

COOKWARE & BAKEWARE



SHOP NOW

PREPARA - GN



SHOP NOW

CAMBRO - GN



SHOP NOW

PREPARA - PANS



SHOP NOW

MOULDS & MATS

UTENSILS



SHOP NOW

BRUSHES



SHOP NOW

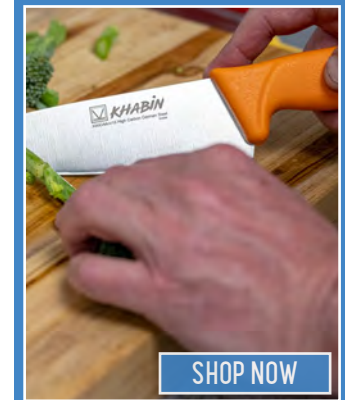
THERMOMETERS



SHOP NOW

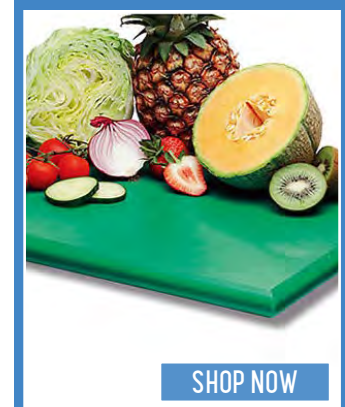
SCALES

KITCHEN ESSENTIALS



SHOP NOW

KNIVES



SHOP NOW

CHOPPING BOARDS

STORAGE & FOOD PREPARATION

BEST SELLERS

- E5524 - Prepara Gastronorm Container 1/1 Stainless Steel 325x200mm, Qty 1
- E7020 - Prepara Gastronorm Container 1/1 Stainless Steel 325x65mm, Qty 1
- EC138 - Prepara Chopping Boards Set With Wall Chart And Rack, Qty 1
- E9442 - Matfer Bourgeat Round Cake Mould Stainless Steel 6x3cm, Qty 1

- E4094 - Cambro Gastronorm Container High Heat 1/1 Amber 325x150mm, Qty 1
- EC876 - Araven Large Food Storage Container With Lid 40ltr Polypropylene, Qty 1
- E4096 - Cambro Gastronorm Plain Lid High Heat 1/1 Amber Polycarbonate, Qty 1
- EC897WH - Prepara Electronic Hand Held Thermometer White -50Å°c to 300Å°c, Qty 1

- EF235 - Prepara Electronic Platform Scale 15kg, Qty 1
- EF097 - Prepara Disc Platform Scale White, Qty 1
- EG502 - Matfer Bourgeat Flat Pastry Brush Natural Bristles 60mm, Qty 1

CATERING APPLIANCES & REFRIGERATION

COOKING EQUIPMENT



SHOP NOW

INDUCTION



SHOP NOW

FILTRATION FRYERS

WAREWASHING



SHOP NOW

UNDERCOUNTER



SHOP NOW

PASS/THRU DISHWASHERS

REFRIGERATION



SHOP NOW

ARCTICA



SHOP NOW

FOSTER

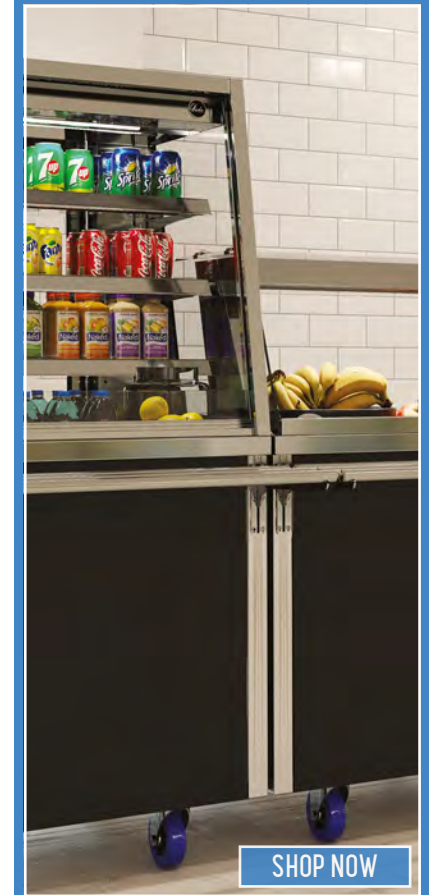
FOOD PREPARATION



SHOP NOW

ROBOT COUPE

MODULAR COUNTERS



SHOP NOW

FOOD GANTRY

CATERING APPLIANCES & REFRIGERATION

BEST SELLERS

- HEB073 - Foster BCT38-18 Blast Chiller/Freezer - 38kg Chill / 18kg. Qty 1
- HEB427 - Foster x R1300L Xtra Upright Freezer - 1300 Litre. Qty 1
- HEB429 - Foster x R3H Xtra Refrigerated Counter 435 Litre - 3 Door. Qty 1
- HEC918 - Arctic Chest Freezer - 568Ltr - White with Stainless Steel Lid. Qty 1

- HEC493 - Lincat Opus 800 OE8114 Electric Fryer - 1 Pan. Qty 1
- HEA516 - Chefmaster 2kW Single Zone Countertop Induction Hob. Qty 1
- HE5461 - Falcon Dominator Plus G3860 Gas Fryer - 1 Pan 2 Basket - on Legs. Qty 1
- HE4195 - Winterhalter UC-ME-ENERGY Dishwasher - with Softener. Qty 1

- HE4114 - Winterhalter UC-LE Dishwasher - with Softener. Qty 1
- HEA232 - Robot Coupe MP550 Ultra Stick Blender. Qty 1
- HE5031 - Robot Coupe R301 Food Processor 3.5ltr 650watt. Qty 1

CLOTHING

CLOTHING

[SHOP NOW](#)

BIB APRONS

[SHOP NOW](#)

MONEY POCKETS

[SHOP NOW](#)

POLO SHIRTS

[SHOP NOW](#)

NECKERCHIEFS

[SHOP NOW](#)

HEADWEAR

[SHOP NOW](#)

CHEF TROUSER

[SHOP NOW](#)

WAIST APRONS

[SHOP NOW](#)

BREATHABLE JACKETS

[SHOP NOW](#)

CLASSIC JACKETS

CLOTHING

BEST SELLERS

- Q2972 - Brigade White Unisex Polycotton Short Sleeve Popper Jacket
- Q2974 - Brigade Black Unisex Polycotton Short Sleeve Popper Jacket
- Q2979 - Brigade White Unisex Polycotton Short Sleeve Vent Jacket
- Q2980 - Brigade Black Polycotton Trousers With Pockets

- Q2991BK - Brigade Black Polycotton Waist Apron With Pocket 76x90cm, Qty 1
- Q2991WH - Brigade White Polycotton Waist Apron With Pocket 76x90cm, Qty 1
- Q2993WH - Brigade White Polycotton Bib Apron 96x72cm, Qty 1
- Q2993BS - Brigade Butcher Stripe Polycotton Bib Apron 96x72cm, Qty 1

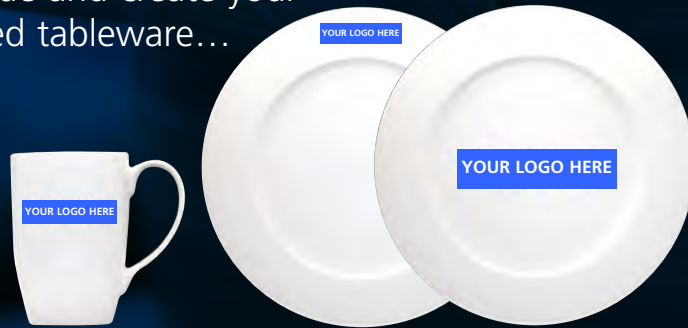
- Q2982 - Brigade Large Black Check Polyester Trousers
- Q2995WH - Brigade White Polycotton Skull Cap With Elastic, Qty 1
- Q2997BK - Brigade Black Six Panel Polyester Baseball Cap, Qty 1
- Q2985 - Brigade Black Pique Polycotton Polo Shirt
- Q2984 - Brigade White Pique Polycotton Polo Shirt

BESPOKE

BADGING

Personalise Your Tableware Using Our Badging Service...

Do you want to stand out from the crowd? Be unique and create your own personalised tableware...



All we need to know...

- ✓ Item list and quantities
- ✓ Logo location
- ✓ Pantone colour reference
- ✓ High resolution image of your logo(s)

To enquire more about our Bespoke Badging service, call the sales team now.

Please note that personalised items cannot be returned.

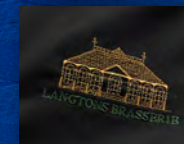
EMBROIDERY

Personalise Your Chefs' Clothing using our embroidery service...

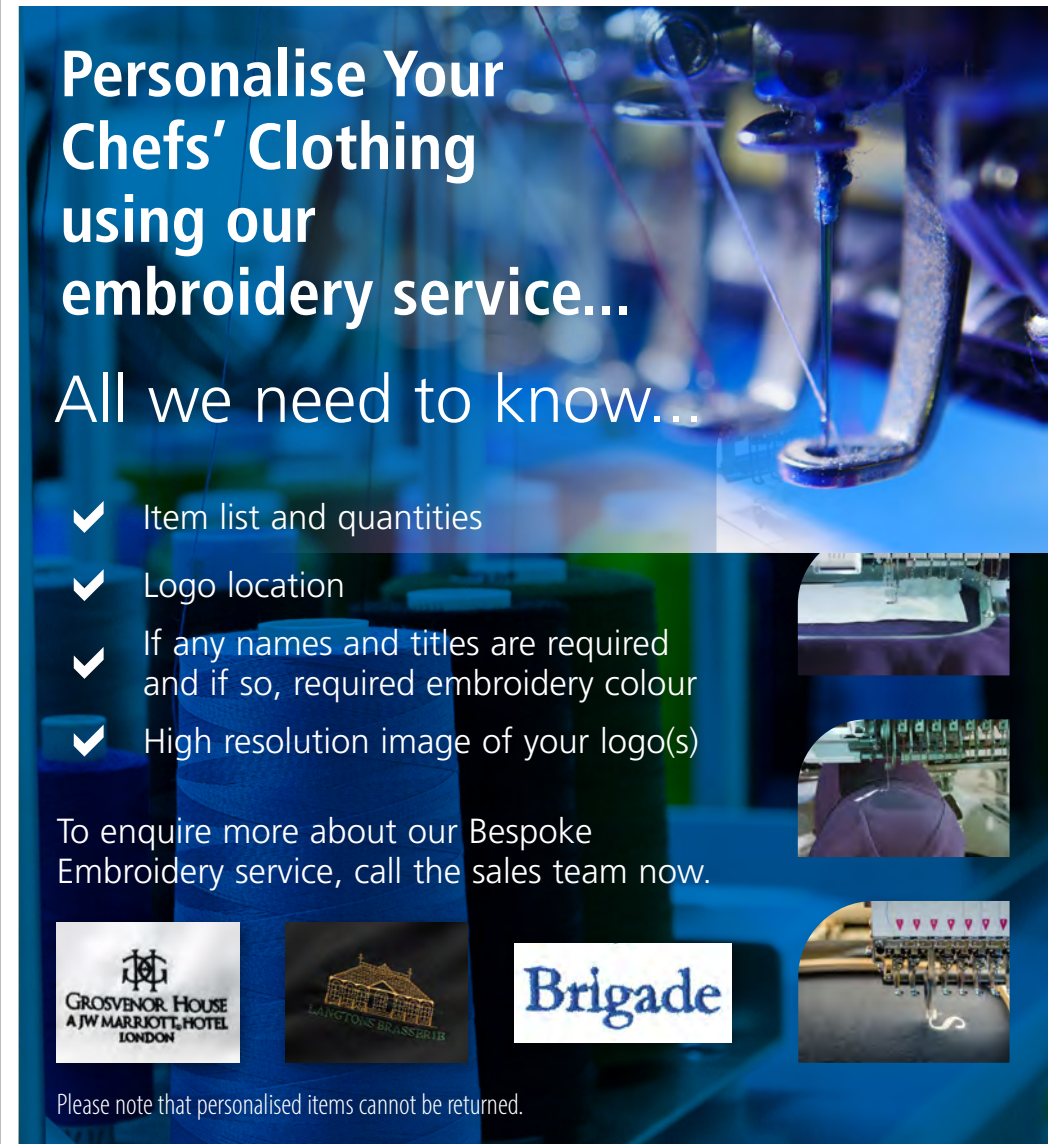
All we need to know...

- ✓ Item list and quantities
- ✓ Logo location
- ✓ If any names and titles are required and if so, required embroidery colour
- ✓ High resolution image of your logo(s)

To enquire more about our Bespoke Embroidery service, call the sales team now.



Please note that personalised items cannot be returned.



BUNZL PLC AND CATERING DIVISION

BUILDING OUR SUSTAINABLE FUTURE

Sustainability is firmly embedded in the way we do business at Bunzl. As a global group, our aim is to:

- Provide tailored solutions
- Deliver through Responsible supply chains
- Take action on climate change
- Invest in our people

Material ESG issues

Key themes

Our contribution to the theme

<ul style="list-style-type: none"> • Supply chain management and stewardship • Human rights and fair and safe labour 	 <p>Responsible Supply Chain</p>	Respecting human rights with our industry-leading Global Supply Chain Solutions team in Shanghai
<ul style="list-style-type: none"> • Equal opportunities • Gender, ethnic, LGBTQIA and disability diversity 	 <p>Investing in our people and a diverse workforce</p>	Our local businesses are focused on developing talent, increasing diversity and enhancing inclusivity practices
<ul style="list-style-type: none"> • Renewable energy and energy efficiency • Low and zero carbon logistics • Supply chain emissions 	 <p>Taking further action on climate change</p>	Consolidating orders from a range of sources into one delivery to reduce transport emissions and taking direct action to tackle climate change
<ul style="list-style-type: none"> • Availability of products and services with sustainable attributes • Supporting a more circular economy 	 <p>Providing tailored alternative solutions</p>	Using our unique position at the centre of the supply chain, working with customers and suppliers to lead the transition towards a sustainable approach to packaging



TAILORED SOLUTIONS & RESPONSIBLE SUPPLY CHAIN:

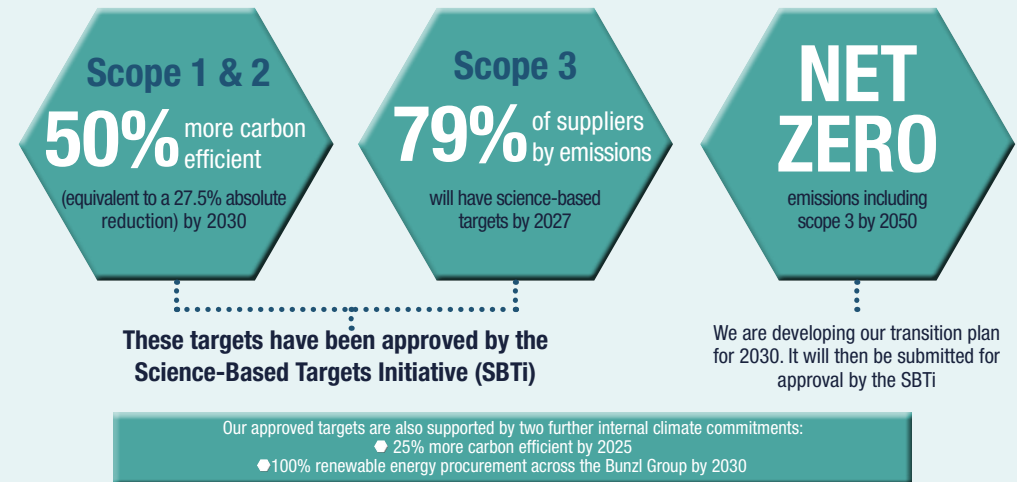
At Bunzl, we take a leading approach to ethical auditing across our supply chain, possess a carbon-efficient consolidation model, and supply an extensive range of alternative packaging products to drive the transition towards a more sustainable and circular economy.

Bunzl's divisions are helping customers achieve sustainability goals. We have implemented tools to assess the material impact of packaging legislation and developed delivery solutions that reduce emissions. The company is at the forefront of the transition to a circular economy, offering customised sustainable packaging. The Asia team has increased ethical audits by 23%, expanding beyond Asia to cover high-risk sourcing regions and products.



TAKING ACTION TO CLIMATE CHANGE:

The impacts of climate change are already with us, as extreme weather and biodiversity loss affect the communities least able to withstand it. Without concerted and ambitious action from companies and governments, climate change will have a significant effect on our businesses and our daily lives. Our solutions significantly reduce road miles and minimise both our and our customers' carbon footprint by consolidating multiple items into single mixed pallet deliveries. We're also playing our part by cutting emissions across our own business – because it's critical that we support the global efforts to limit warming.





LOCKHART CATERING EQUIPMENT

Lockhart prioritises the well-being and development of our people while protecting our community and the environment.

Our commitment extends to delivering sustainable solutions that create positive environmental and social impacts for our customers. By integrating responsible sourcing, product innovation and efficient operations, we collaborate with our people and suppliers to support our customers in achieving their sustainability goals, driving meaningful change toward a more resilient and inclusive future.

OUR CUSTOMERS

We share what we know about sustainability with our customers. Working together we can create solutions for a sustainable future.



SUSTAINABLE BUSINESS SOLUTIONS

EXPERT, IMPARTIAL ADVICE

SUSTAINABLE PRODUCT SOLUTIONS

OUR BRANDS

- Reducing unnecessary single-use plastic from product packaging
- Packaging material reduction
- Total product impact assessment (More information on Pg.5)

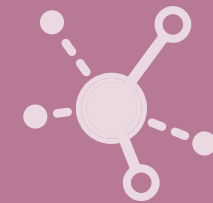


SUPPLIERS

- Top 100 Suppliers Sustainability Statement to understand:
- Commitment to Net Zero
 - Commitment to SBTi
 - Impact of operation
 - Projects so far
 - Planned activity
- (Sustainability Stories from Suppliers on Pages 19-33)

OUR SUPPLIERS

We buy responsibly and ethically from trusted suppliers. We deliver products and services with integrity and confidence.



RESPONSIBLE, ETHICAL SUPPLY CHAINS

MATERIAL AND DESIGN INNOVATION

EFFICIENT DISTRIBUTION NETWORK

SOLUTIONS

- Bringing product solutions to help reduce Scope 1 & 2
- Clear, concise unbiased product solution information to support product selection



SUSTAINABLE FUTURE



Our priorities are well-being and development of our people while protecting our community and the environment. Our commitment extends to delivering sustainable solutions that create positive environmental and social impacts for our customers. By integrating responsible sourcing, product innovation, and efficient operations, we collaborate with our people and suppliers to support our customers in achieving their sustainability goals, driving meaningful change toward a more resilient and inclusive future.

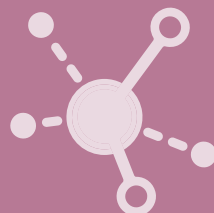
OUR CUSTOMERS

We share what we know about sustainability with our customers. Working together, we can create solutions for a sustainable future.



OUR SUPPLIERS

We buy responsibly and ethically from trusted suppliers. We deliver products and service with integrity and confidence.



OUR PEOPLE

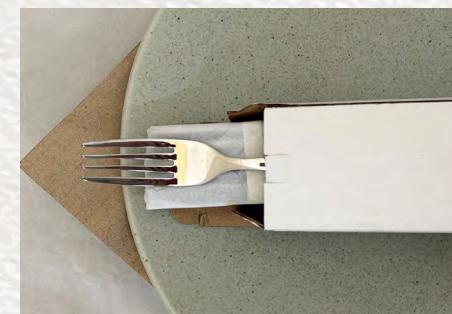
We safeguard the wellbeing and development of our people. Putting sustainability first in everything we do, we are protecting our community and the environment.



SUSTAINABLE FUTURE OUR DRIVE TO ELIMINATE HIDDEN SINGLE-USE PLASTIC



With recent legislation banning single-use plastic items most commonly littered in our environment, the attention has focused on single-use and understanding where we can help our suppliers and customers reduce this. This shift has sparked a collective effort to explore alternative materials, redesign products, and implement sustainable practices throughout the supply chain. By working closely with our suppliers and engaging with our customers, we aim to identify opportunities to eliminate or replace single-use plastics with alternative materials.



Within the catering equipment sector, single-use plastic has found its way into product packaging to deliver cost-effective protection to products during transit. However, the time has come to reject this practice and drive out single-use plastic wherever possible. We have been actively focusing on eliminating single-use plastic packaging. Two out of our three exclusive cutlery brands are now entirely free of such packaging. Pieces from our Signature Style and Signature Steel brands are now wrapped in tissue paper and banded with paper. In addition to this, all single-use plastic was removed from the packaging in our Artisan crockery ranges and replaced with cardboard. Also, plastic sleeves have been removed from our Prepara Gastronorms. 50% of our Exclusive brands have removed single-use plastic from their

packaging. We continue to work with our suppliers to remove as much plastic waste as possible.

We are also challenging and working with all our supplier partners to do the same. Many have already made huge improvements with millions of pieces of single-use plastics being removed. For example, Robot Coupe has focused on reduction in packaging from the design onwards. The packaging Rational uses is also almost fully recyclable, with most being cardboard and wood. Meanwhile, 100% of Churchill's core packaging is recyclable.

We are on a programme of continuous improvement to ensure single-use plastic in product packaging becomes a thing of the past.



 **LOCKHART**
Catering Equipment

CATERING EQUIPMENT FOR
EDUCATION

Call us on 03701 678678 or visit lockhart.co.uk/education

Designed and distributed exclusively by Bunzl Lockhart Catering Equipment.
HEAD OFFICE: Bunzl Lockhart Catering Equipment, Lockhart House, Brunel Road, Theale, Berkshire, RG7 4XE