

# Crème



# CONTENTS

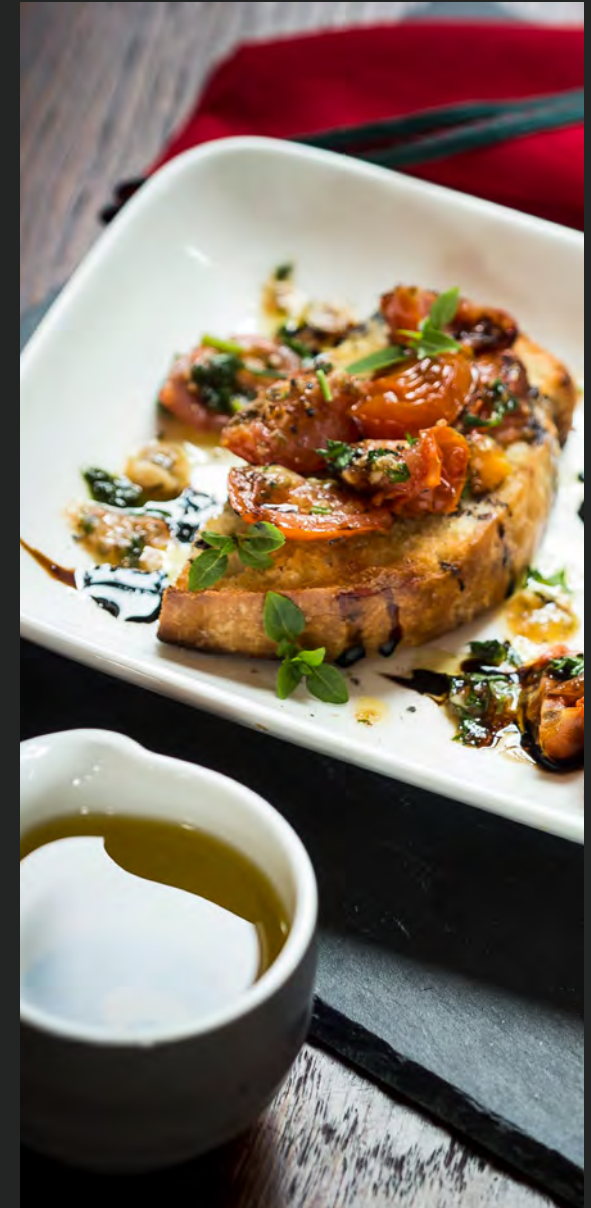
---



## CRÈME – SIMPLE, REFINED, BEAUTIFUL.

Crème is the perfect blank canvas for culinary creations – immaculate ivory body colour, classic style and innovative shapes together with truly world-class standards of quality and product performance.... All of this at remarkably affordable prices.

Mix and match the different ranges together to create stunning food presentation.





# CÉZANNE COLLECTION - WHITE ON WHITE CONCENTRIC BANDS



## Plates



01

- 01 **BH803** Rim Plate 12¼", 31cm Case Qty 6
- 01 **BJ799** Rim Plate 11⅜", 29cm Case Qty 6
- 01 **BH802** Rim Plate 10⅞", 27cm Case Qty 12
- 01 **BH801** Rim Plate 10", 25.4cm Case Qty 12
- 01 **BH800** Rim Plate 8¼", 21cm Case Qty 12
- 01 **BH799** Rim Plate 6¾", 17cm Case Qty 12

## Bowls & Platter



02



03



04



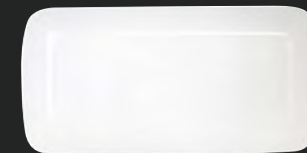
05



06



07



08



- 08 **BI833** Oblong Platter 11", 28cm Case Qty 6

# CÉZANNE COLLECTION - WHITE ON WHITE CONCENTRIC BANDS

## Beverage



09



10



11



12



13



14



15



16



17



18

09 **BH811** Cup 12oz, 34cl Case Qty 12  
 10 **BH809** Cup 8oz, 23cl Case Qty 12  
 11 **BH810** Cup 3oz, 9cl Case Qty 12  
 12 **BH812** Mug 10oz, 28.4cl Case Qty 6  
 13 **BH807** Stacking Cup 7oz, 20cl Case Qty 12  
 14 **BH808** Stacking Cup 3oz, 9cl Case Qty 12

15 **BH817** Teapot 14oz, 40cl Case Qty 4  
 16 **BJ800** Jug 9oz, 25cl Case Qty 12  
 16 **BH818** Jug 5oz, 15cl Case Qty 12  
 17 **BH814** Large Saucer 6", 15cm Case Qty 12  
 18 **BH813** Small Saucer 5", 13cm Case Qty 12



### Saucer Compatibility Guide

BH813 Fits BH808, BH810

BH814 Fits BH807, BH809, BH811

# MONET COLLECTION - THE MAIN COLLECTION



## Plates



01

02

- |    |              |                                       |             |
|----|--------------|---------------------------------------|-------------|
| 01 | <b>BH747</b> | Rim Plate 12 $\frac{1}{4}$ " , 31cm   | Case Qty 6  |
| 01 | <b>BJ483</b> | Rim Plate 11 $\frac{3}{8}$ " , 29cm   | Case Qty 6  |
| 01 | <b>BH746</b> | Rim Plate 10 $\frac{5}{8}$ " , 27cm   | Case Qty 12 |
| 01 | <b>BH745</b> | Rim Plate 10" , 25.4cm                | Case Qty 12 |
| 01 | <b>BH744</b> | Rim Plate 9" , 23cm                   | Case Qty 12 |
| 01 | <b>BH743</b> | Rim Plate 8 $\frac{1}{4}$ " , 21cm    | Case Qty 12 |
| 01 | <b>BH721</b> | Rim Plate 6 $\frac{3}{4}$ " , 17cm    | Case Qty 12 |
| 02 | <b>BJ484</b> | Pizza Plate 12 $\frac{3}{8}$ " , 32cm | Case Qty 6  |

## Bowls



03

04

05

06



07

08

09

10

11

12

- |    |              |                                    |             |    |              |   |             |
|----|--------------|------------------------------------|-------------|----|--------------|---|-------------|
| 03 | <b>BH753</b> | Rim Bowl 12" , 30cm                | Case Qty 6  | 09 | <b>BH754</b> | Side Bowl 3 $\frac{3}{8}$ " , 9cm         | Case Qty 12 |
| 04 | <b>BH752</b> | Rim Bowl 10 $\frac{1}{4}$ " , 26cm | Case Qty 6  | 10 | <b>BH748</b> | Stacking Soup Handled 10oz, 30cl          | Case Qty 8  |
| 05 | <b>BH751</b> | Rim Soup Bowl 9" , 23cm            | Case Qty 12 | 11 | <b>BH749</b> | Stacking Soup Unhandled 10oz, 30cl        | Case Qty 12 |
| 06 | <b>BH750</b> | Bowl 6 $\frac{1}{4}$ " , 16cm      | Case Qty 8  | 12 | <b>BH785</b> | Soup Bowl Saucer 6 $\frac{3}{4}$ " , 17cm | Case Qty 12 |
| 07 | <b>BH756</b> | Side Bowl 6 $\frac{1}{4}$ " , 16cm | Case Qty 8  |    |              |   |             |
| 08 | <b>BH755</b> | Side Bowl 4 $\frac{3}{4}$ " , 12cm | Case Qty 12 |    |              |   |             |

### Saucer Compatibility Guide

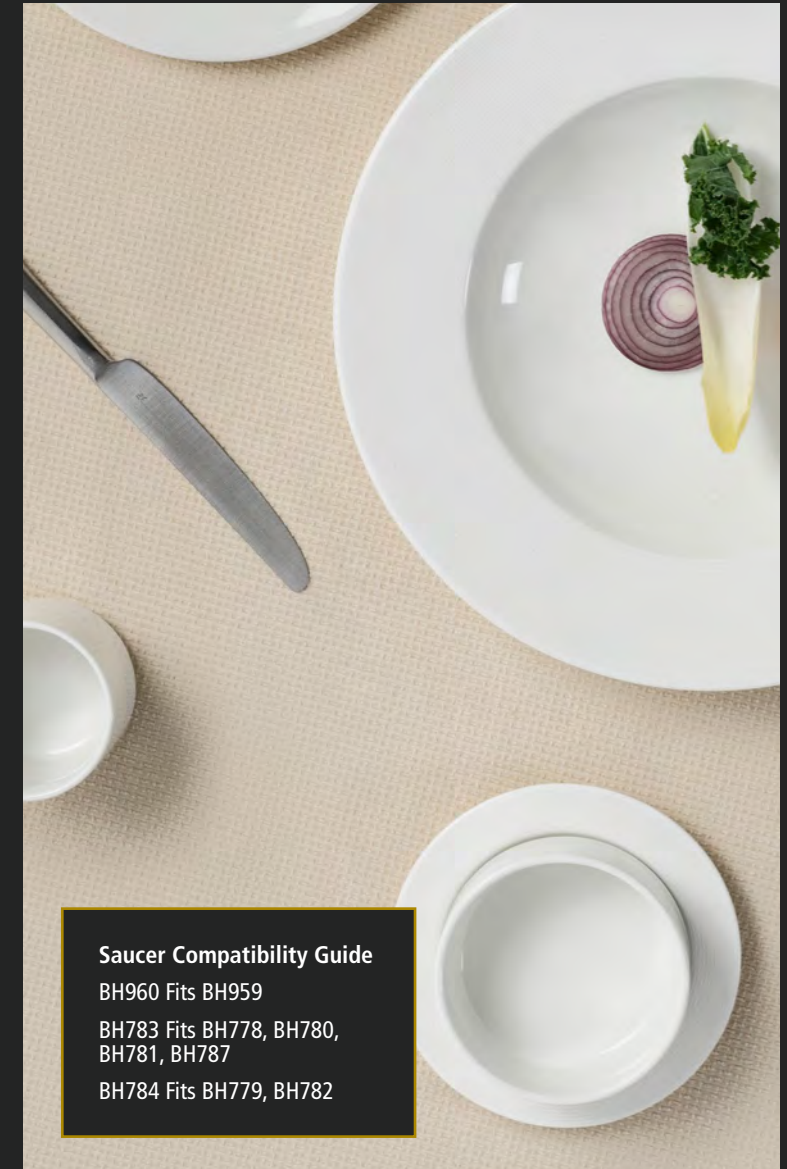
BH785 Fits BH748, BH749, BH793, BH804

# MONET COLLECTION - THE MAIN COLLECTION

## Beverage



15	<b>BH780</b>	Cup 12oz, 34cl	Case Qty 12	22	<b>BH786</b>	Mug 10oz, 28.4cl	Case Qty 6
16	<b>BH781</b>	Cup 8oz, 23cl	Case Qty 12	23	<b>BM579</b>	Mug 8oz, 23cl	Case Qty 6
17	<b>BH782</b>	Cup 3oz, 9cl	Case Qty 12	24	<b>BH787</b>	Stacking Mug 10oz, 28.4cl	Case Qty 12
18	<b>BH959</b>	Traditional Stacking Cup 7oz, 20cl	Case Qty 12	25	<b>BH960</b>	Traditional Saucer 6", 15cm	Case Qty 12
19	<b>BH778</b>	Stacking Cup 7oz, 20cl	Case Qty 12	26	<b>BH783</b>	Saucer Large 6", 15cm	Case Qty 12
20	<b>BH779</b>	Stacking Cup 3oz, 9cl	Case Qty 12	27	<b>BH784</b>	Saucer Small 5", 13cm	Case Qty 12
21	<b>BI828</b>	Mug 12oz, 35cl	Case Qty 6				



### Saucer Compatibility Guide

BH960 Fits BH959

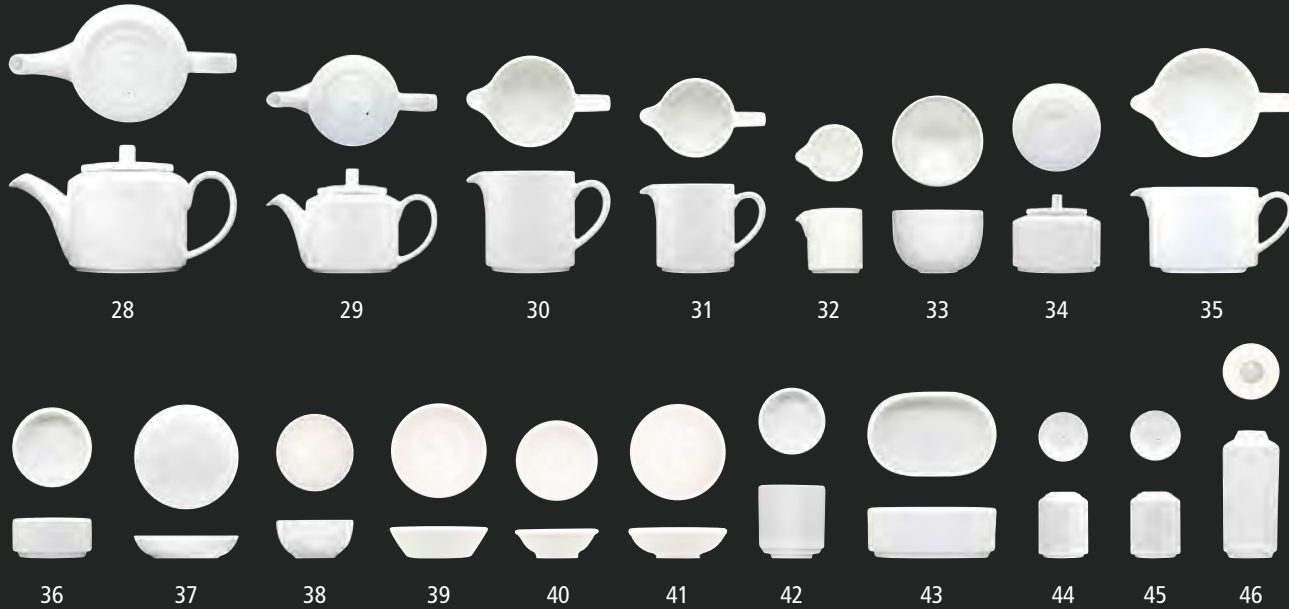
BH783 Fits BH778, BH780,  
BH781, BH787

BH784 Fits BH779, BH782

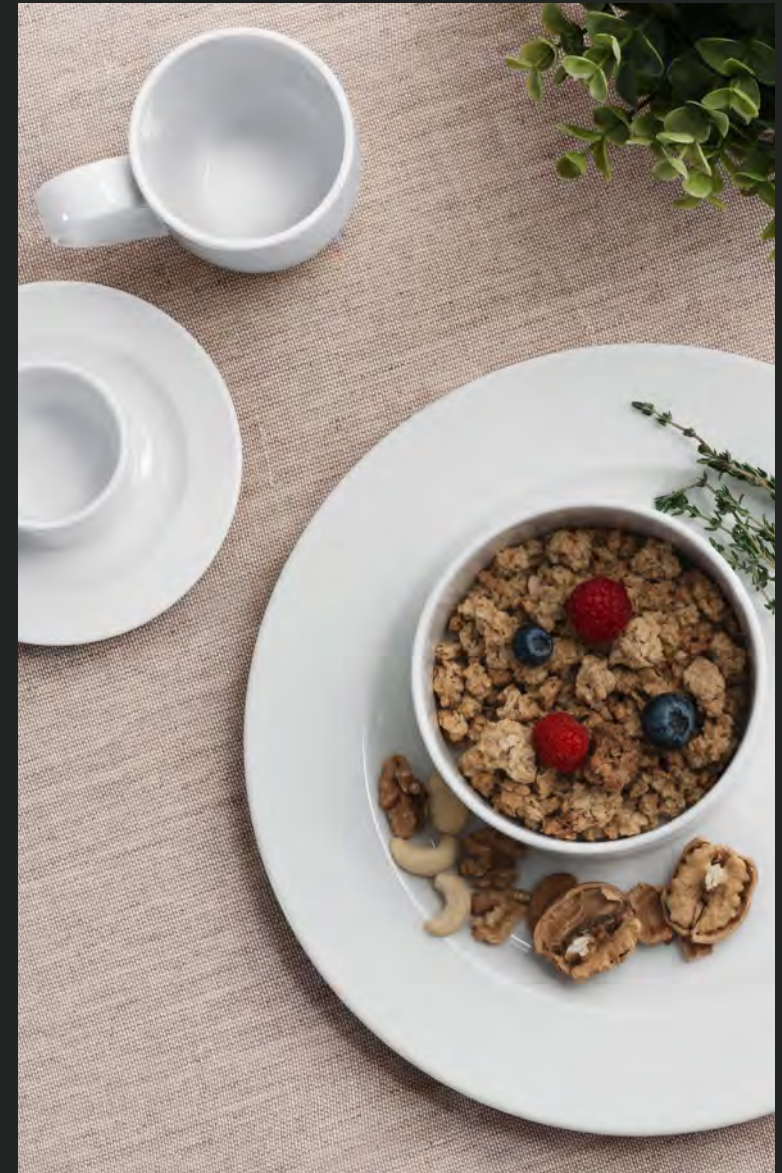


# MONET COLLECTION - THE MAIN COLLECTION

## Accessories



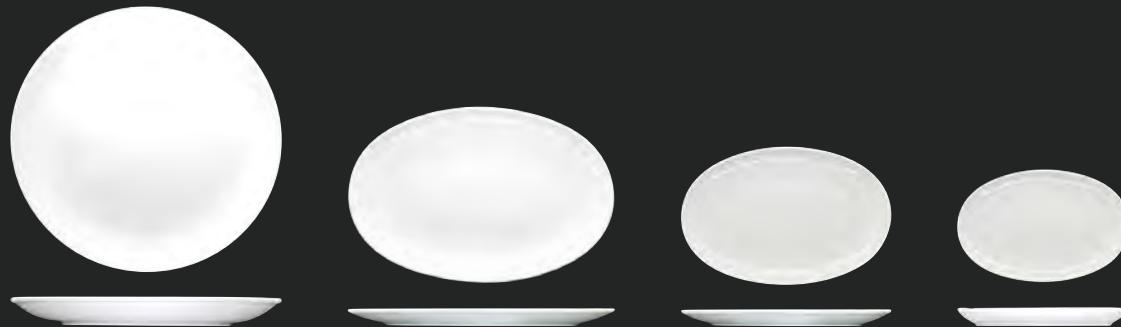
28	<b>BH788</b>	Teapot 28oz, 80cl	Case Qty 1	38	<b>BI504</b>	Dip Bowl 1oz 5.6cm	Case Qty 12
29	<b>BH789</b>	Teapot 14oz, 40cl	Case Qty 4	39	<b>BL859</b>	Conical Sauce Dish 8cm	Case Qty 18
30	<b>BH790</b>	Jug 9oz, 25cl	Case Qty 12	40	<b>BK041</b>	Dip Dish 7.5 x 2.45cm	Case Qty 18
31	<b>BH791</b>	Jug 5oz, 15cl	Case Qty 12	41	<b>BL860</b>	Dip Dish 7cm	Case Qty 18
32	<b>BH792</b>	Jug 2oz, 5cl	Case Qty 12	42	<b>BI637</b>	Egg Cup 5cm	Case Qty 12
33	<b>BJ485</b>	Open Sugar Bowl 8oz, 23cl	Case Qty 12	43	<b>BH798</b>	Sachet Holder 11cm	Case Qty 12
34	<b>BH794</b>	Covered Sugar Bowl 9½oz, 27cl	Case Qty 4	44	<b>BH815</b>	Salt Pot	Case Qty 12
35	<b>BH793</b>	Sauce Boat 12oz, 35cl	Case Qty 6	45	<b>BH816</b>	Pepper Pot	Case Qty 12
36	<b>BH795</b>	Butter Block 7cm	Case Qty 12	46	<b>BI827</b>	Bud Vase	Case Qty 6
37	<b>BH796</b>	Butter Pad 10cm	Case Qty 12				



# RENOIR COLLECTION - THE COUPE SHAPE



## Plates



01

02

03

04

- 01 **BH771** Coupe Plate 12¼", 31cm Case Qty 6
- 01 **BH770** Coupe Plate 10⅝", 27cm Case Qty 12
- 01 **BH769** Coupe Plate 9½", 24cm Case Qty 12
- 01 **BH768** Coupe Plate 8¼", 21cm Case Qty 12
- 01 **BH767** Coupe Plate 7", 18cm Case Qty 12

- 02 **BH777** Oval Coupe Plate 12½" 32cm Case Qty 6
- 03 **BH776** Oval Coupe Plate 10¼" 26cm Case Qty 12
- 04 **BH775** Oval Coupe Plate 8" 20cm Case Qty 12

## Bowls



05

06

07

08

- 05 **BI829** Deep Coupe Bowl 10¼", 26cm Case Qty 6
- 06 **BH774** Coupe Kick Bowl 8¼", 21cm Case Qty 4
- 07 **BH773** Coupe Kick Bowl 7", 18cm Case Qty 4
- 08 **BH772** Coupe Kick Bowl 4⅔", 12cm Case Qty 8

## Platters



09

10

- 09 **BH766** Oblong Plate 35.5cm x 16.5cm Case Qty 6
- 10 **BH888** Oblong Plate 28cm x 13.5cm Case Qty 6



# RENOIR COLLECTION - THE COUPE SHAPE

## Beverage



11

12

13



14

15

16

11	<b>BM394</b>	Cup 12oz, 34cl	Case Qty 6
12	<b>BM393</b>	Cup 10oz, 28cl	Case Qty 8
13	<b>BM392</b>	Cup 8oz, 23cl	Case Qty 12
14	<b>BM391</b>	Cup 3oz, 9cl	Case Qty 12
15	<b>BM580</b>	Saucer 5", 13cm	Case Qty 12
16	<b>BI864WH</b>	All For One Saucer 6¼", 16cm	Case Qty 12



### Saucer Compatibility Guide

BI864WH Fits BM394, BM393, BM392  
 BM580 Fits BM391

# ROUSSEAU COLLECTION - EMBOSSED NATURAL WAVES



02



03

## Plates



01

## Bowls



04



05



06

- 01 **BJ495** Rim Plate 12¼", 31cm Case Qty 6
- 01 **BJ494** Rim Plate 10⅝", 27cm Case Qty 12
- 01 **BJ493** Rim Plate 10", 25.4cm Case Qty 12
- 01 **BJ492** Rim Plate 8¼", 21cm Case Qty 12
- 01 **BJ491** Rim Plate 6¾", 17cm Case Qty 12

- 02 **BJ496** Rim Bowl 12", 30cm Case Qty 6
- 03 **BJ509** Side Bowl 4¾", 12cm Case Qty 6
- 03 **BJ508** Side Bowl 3⅝", 9cm Case Qty 12
- 04 **BJ497** Rim Soup Bowl 9", 23cm Case Qty 12
- 05 **BJ498** Stacking Soup Unhandled 10oz, 30cl Case Qty 12
- 06 **BJ499** Soup Bowl Saucer 6¾", 17cm Case Qty 12

### Saucer Compatibility Guide

BJ499 Fits BJ498



# ROUSSEAU COLLECTION - EMBOSSED NATURAL WAVES

## Beverage



07      08      09      10



11      12      13      14

- |    |              |                               |             |
|----|--------------|-------------------------------|-------------|
| 07 | <b>BJ501</b> | Cup 8oz, 23cl                 | Case Qty 12 |
| 08 | <b>BJ500</b> | Stacking Cup 7oz, 20cl        | Case Qty 12 |
| 09 | <b>BJ504</b> | Mug 10oz, 28.4cl              | Case Qty 6  |
| 10 | <b>BJ502</b> | Saucer Large 6", 15cm         | Case Qty 12 |
| 11 | <b>BJ503</b> | Teapot 14oz, 40cl             | Case Qty 4  |
| 12 | <b>BJ507</b> | Covered Sugar Bowl 9½oz, 27cl | Case Qty 4  |
| 13 | <b>BJ506</b> | Jug 5oz, 15cl                 | Case Qty 12 |
| 14 | <b>BJ505</b> | Jug 2oz, 5cl                  | Case Qty 12 |



**Saucer Compatibility Guide**  
BJ502 Fits BJ501, BJ500



# ESPRIT COLLECTION - ELEGANCE FOR FINE DINE



## Gourmet Plates

- 03 **BK510** Gourmet Plate 11", 28cm Case Qty 6
- 04 **BK509** Gourmet Bowl 11", 28cm Case Qty 6

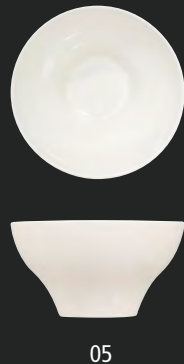


## Plates



- 01 **BK511** Plate 12¼", 31cm Case Qty 6
- 01 **BK507** Plate 10⅝", 28cm Case Qty 6
- 01 **AR0014** Plate 9⅞", 25cm Case Qty 6
- 01 **BP424** Plate 8⅔", 22cm Case Qty 12
- 01 **BK504** Plate 6⅓", 16cm Case Qty 12
- 02 **BK508** Coupe Plate 8¼", 28cm Case Qty 6

## Bowls

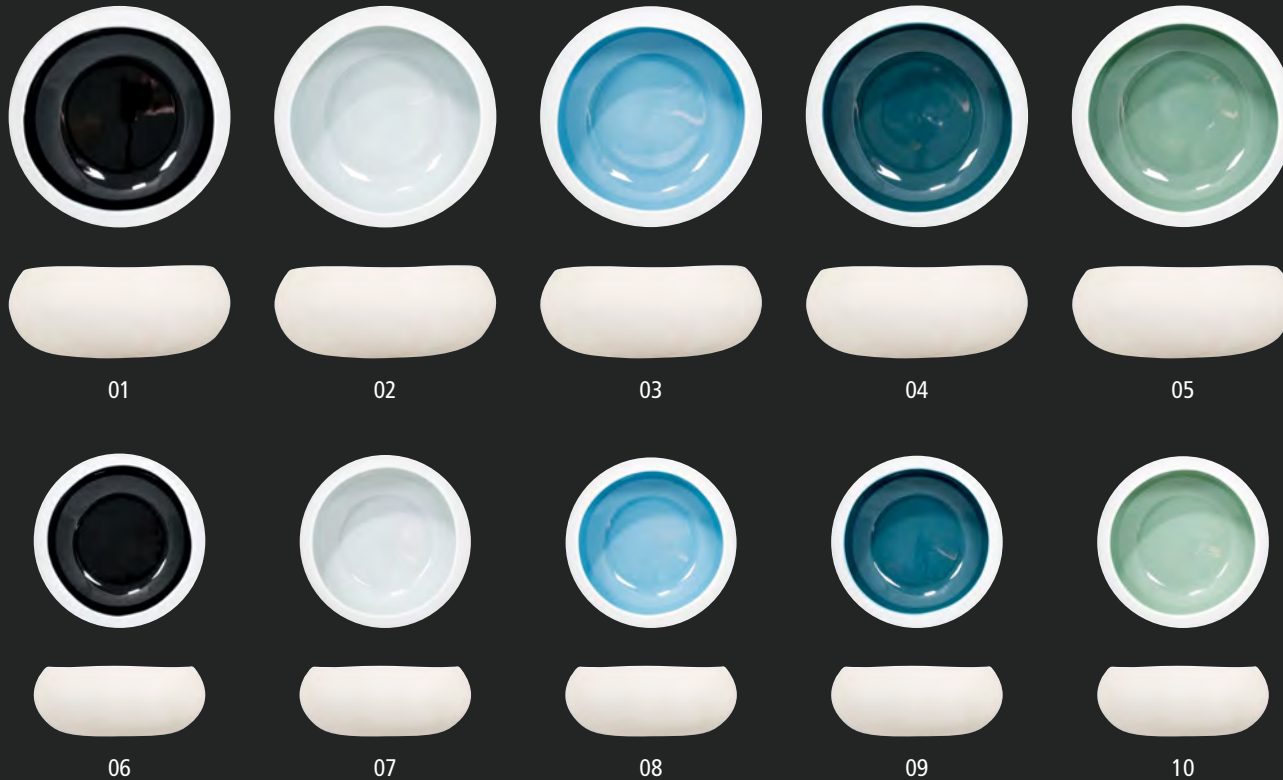


- 05 **BK514** Side Bowl 4¾", 12cm Case Qty 6
- 05 **BK515** Side Bowl 5½", 14cm Case Qty 6



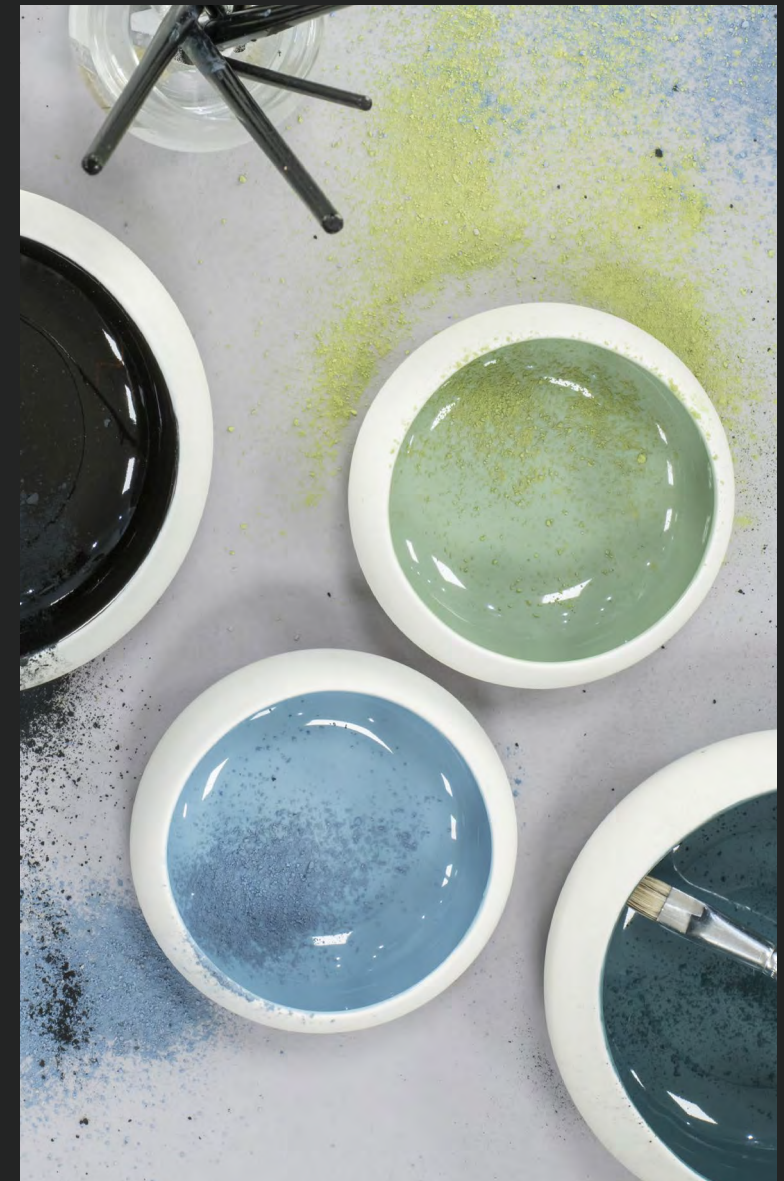
# JOUET COLLECTION - STRIKING BOWLS

## Jouet Bowls



- 01 **BK506BK** Organic Bowl 16cm - Black Case Qty 6
- 02 **BK506GY** Organic Bowl 16cm - Dove Grey Case Qty 6
- 03 **BK506BL** Organic Bowl 16cm - Ash Blue Case Qty 6
- 04 **BK506DG** Organic Bowl 16cm - Sea Green Case Qty 6
- 05 **BK506GN** Organic Bowl 16cm - Pale Sage Case Qty 6

- 06 **BK516BK** Organic Bowl 12cm - Black Case Qty 12
- 07 **BK516GY** Organic Bowl 12cm - Dove Grey Case Qty 12
- 08 **BK516BL** Organic Bowl 12cm - Ash Blue Case Qty 12
- 09 **BK516DG** Organic Bowl 12cm - Sea Green Case Qty 12
- 10 **BK516GN** Organic Bowl 12cm - Pale Sage Case Qty 12



# JOUET COLLECTION - CLASSIC MINIS

## Jouet Miniatures



01



02



03



04



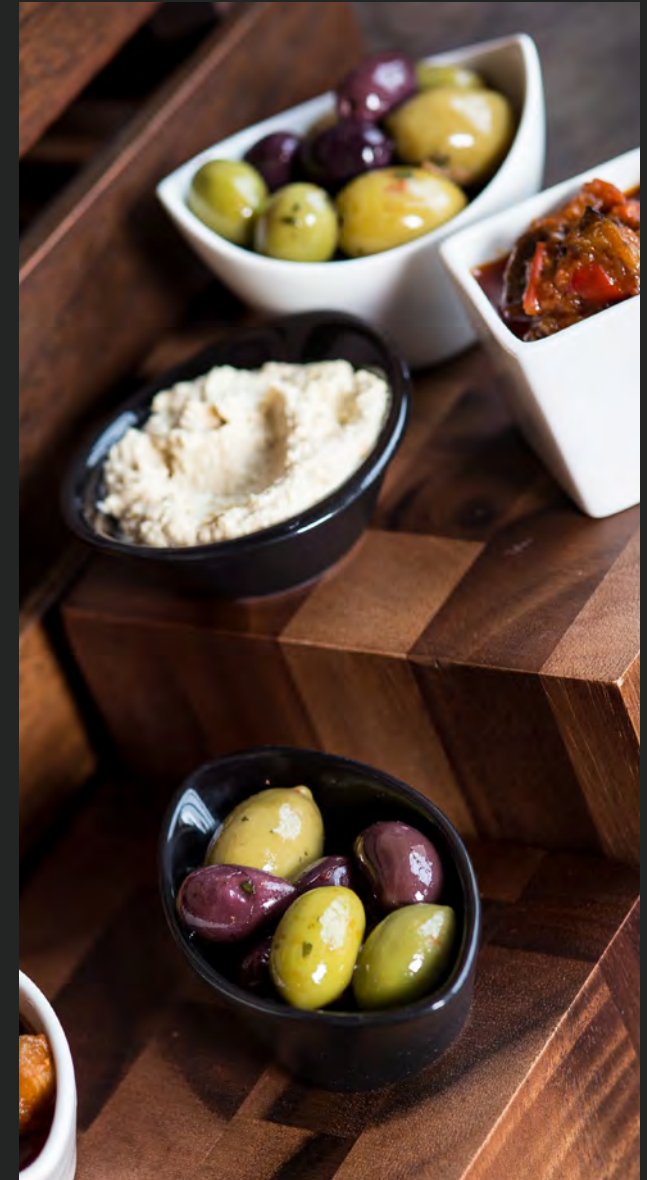
05

06

07

- 01 **BI835WH** Star Bowl 9 x 4.3cm Case Qty 12
- 02 **BI837WH** Teardrop Bowl 10.7 x 8.4 x 3cm Case Qty 12
- 03 **BI838WH** Conical Bowl 10.7 x 6.3 x 4.4cm Case Qty 12
- 04 **BI839WH** Cube 5.9 x 4.9cm Case Qty 12

- 05 **BI836BK** Curved Bowl 8.5 x 3.5cm Case Qty 12
- 06 **BI837BK** Teardrop Bowl 10.7 x 8.4 x 3cm Case Qty 12
- 07 **BI839BK** Cube 5.9 x 4.9cm Case Qty 12





# GALERIE COLLECTION - THE BUFFET COLLECTION

## Oven To Tableware



01



02



03

- |    |              |                          |            |
|----|--------------|--------------------------|------------|
| 01 | <b>BM120</b> | Dish 39 x 25.5 x 6.5cm   | Case Qty 2 |
| 02 | <b>BM119</b> | Dish 25.5 x 25.5 x 6.5cm | Case Qty 2 |
| 03 | <b>BM118</b> | Dish 25.5 x 13 x 6.5cm   | Case Qty 4 |



## Buffet Bowls



04



05



06



07



08



09

- |    |                |                                       |            |
|----|----------------|---------------------------------------|------------|
| 04 | <b>BK520WH</b> | Deep Buffet Bowl 23cm - Crème / White | Case Qty 1 |
| 05 | <b>BK520GY</b> | Deep Buffet Bowl 23cm - Pebble / Grey | Case Qty 1 |
| 06 | <b>BK520BK</b> | Deep Buffet Bowl 23cm - Onyx / Black  | Case Qty 1 |
| 07 | <b>BK524WH</b> | XL Buffet Bowl 39cm - Crème / White   | Case Qty 1 |
| 08 | <b>BK524GY</b> | XL Buffet Bowl 39cm - Pebble / Grey   | Case Qty 1 |
| 09 | <b>BK524BK</b> | XL Buffet Bowl 39cm - Onyx / Black    | Case Qty 1 |

# GALERIE COLLECTION - THE BUFFET COLLECTION

## Gastronorm Dishes



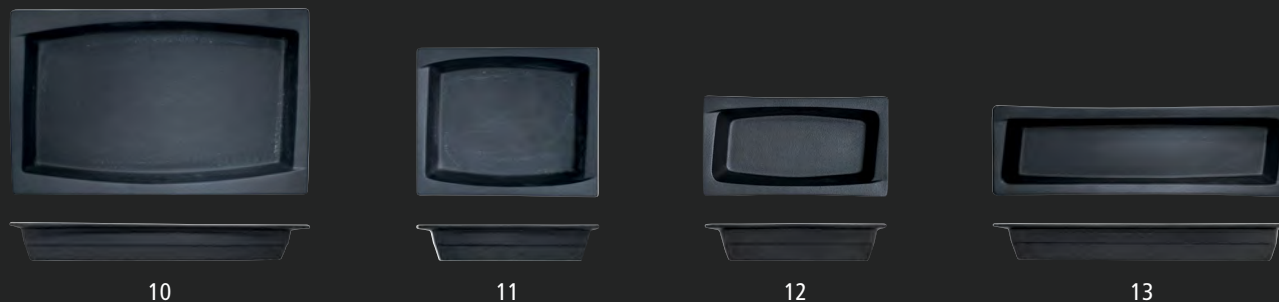
01	<b>BI343</b>	GN 1/1 - 53 x 32.5 x 6.5cm	Case Qty 1
02	<b>BI344</b>	GN 1/2 - 32.5 x 26.5 x 6.5cm	Case Qty 1
03	<b>BI345</b>	GN 1/3 - 17.6 x 32.5 x 6.5cm	Case Qty 1
04	<b>BI346</b>	GN 2/3 - 35.4 x 32.5 x 6.5cm	Case Qty 1
05	<b>BI347</b>	GN 2/4 - 53 x 16.2 x 6.5cm	Case Qty 1

## Gastronorm Trays



06	<b>BJ490</b>	GN 1/1 - 53 x 32.5 x 2.5cm	Case Qty 1
07	<b>BJ487</b>	GN 1/2 - 32.5 x 26.5 x 2.5cm	Case Qty 1
08	<b>BJ486</b>	GN 1/3 - 17.6 x 32.5 x 2.5cm	Case Qty 1
09	<b>BJ489</b>	GN 2/4 - 53 x 16.2 x 2.5cm	Case Qty 1

## Onyx Gastronorm Dishes



10	<b>BK518</b>	GN 1/1 - 53 x 32.5 x 6.5cm	Case Qty 1
11	<b>BK521</b>	GN 1/2 - 32.5 x 26.5 x 6.5cm	Case Qty 1
12	<b>BK522</b>	GN 1/3 - 17.6 x 32.5 x 6.5cm	Case Qty 1
13	<b>BK523</b>	GN 2/4 - 53 x 16.2 x 6.5cm	Case Qty 1

# IMPRESSIONS COLLECTION



## Cerne

Inspired by the desire to re-imagine the simplest of tableware designs (the round plate) 'Cerme' is the French word for circle. When viewed from above the 'Cerme' shape appears to be entirely conventional but when viewed in profile the radical nature of its design is revealed.



BH892 Cerne Plate 31cm Case Qty 6



## Carré

Convention dictates that plates should be round. But like all great artists Crème is happy to defy convention and 'Carré' (which means square in French) demonstrates that there are other ways to perfectly balance form and function when presenting food.



BH890 Carré Plate 27cm x 27cm Case Qty 6



## Écharde

Some art reassures, but truly great art is challenging. 'Écharde' took as its inspiration a desire to look at the design of a plate from (quite literally) a number of different angles. Named after the French word for splinter 'Écharde' plays with conventional perspective and ultimately will place a completely different perspective on the food you present.

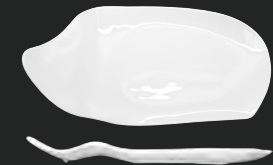


BH891 Écharde Plate 31cm x 19cm Case Qty 6



## Futuriste

Some art looks unashamedly to the future and tries to imagine a different reality. The 'Futuriste' plate is a bold re-imagining of a conventional theme and offers the perfect solution where chefs want to present their own new vision of a classic dish free from the constraints of history.



BH889 Futuriste Plate 34cm x 18cm Case Qty 6



# THE QUALITY OF CRÈME

## MATERIALS AND MANUFACTURING

- Fully Vitrified, High Alumina Fine Porcelain - Crème is a high alumina content, fully vitrified fine porcelain. Using only the highest grade European materials to formulate the world class ceramic body enables the design and production of fine, elegant shapes whilst maintaining durability and strength.
- Colour - The colour of a plate makes a world of difference to the presentation of the dish. Crème is designed with the most immaculate pale ivory colour as the perfect background to every dish.
- World Class Glaze - Using the most advance glazing processes, the glaze is a class leader for appearance and durability which gives Crème a high resistance to metal marking, scratching and dishwasher attack.
- Face Profiles & Stackability - Designed to stack and manufactured using the latest forming technology, Crème boasts an incredible shape uniformity with perfectly flat centres and sharp definition of shapes meaning no humped centres or whirly bases, and no inconsistent stacking gaps.
- Diamond Polished Foot - Different ceramics have different feet. Crème takes every piece and carefully diamond polishes every foot for a consistently smooth finish.



## QUALITY MANAGEMENT

- Exclusively manufactured in a world-class facility that has been awarded ISO9001 for quality management.
- The factory utilises the latest forming, finishing and firing technology to guarantee consistency, efficiency and effective environmental control throughout every process.
- Holding certification for Corporate Social Responsibility to SA8000, the care and well being of the employees & their families is of the utmost importance.
- The factory also holds certification for Environmental Management ISO14000.
- In comparing to the world's best alternative brands, Crème exceeds the very highest standards in the market place. Independent testing results are available upon request.

# PRODUCT CARE – HOW TO GET THE BEST FROM YOUR CRÈME TABLEWARE

---

## STACKING

- Stack items vertically
- Avoid one item sliding or rubbing against another

## CHIPPING

The vast majority of Crème products (all plates, bowls, oval dishes, saucers, cups and mugs) are covered by a lifetime edge chip warranty but it's important to follow these basic guidelines:

- Always handle with care – careless or rough handling causes breakages
- Never scrape the product against a bin or receptacle

## IN THE DISHWASHER

- Rinse thoroughly after use, before loading into a dishwasher
- Wash separately from other items like glassware, cutlery and cooking equipment
- Follow the dishwasher manufacturer guidelines for type and amount of detergent to use
- Keep the dishwasher fully serviced and clean as per manufacturer guidelines
- If metal marks do appear on Crème items, clean with a porcelain cleanser. Check cutlery to ensure there no rough edges
- Wash metal surfaces with water & vinegar to remove any particles which could be transferred.



LIFETIME EDGE  
CHIP WARRANTY



MICROWAVE SAFE



DISHWASHER SAFE



HEAT RETENTION



THERMAL SHOCK  
RESISTANCE



ABRASION &  
METAL MARKING  
RESISTANCE



STACKABILITY



LEAD AND  
CADMIUM FREE

# Crème

Crème is designed and distributed exclusively by Bunzl Lockhart Catering Equipment.

For more information call 03701 678678 or visit [lockhart.co.uk](https://lockhart.co.uk)

Head Office: Bunzl Lockhart Catering Equipment, Lockhart House, Brunel Road, Theale, Berkshire, RG7 4XE.

**Terms & Conditions:** All prices are strictly nett and excluding VAT. All specifications and prices detailed are correct at the time of going to press, errors and omissions excepted, but are subject to alteration by us without prior notice. A copy of our full terms & conditions is available on request.