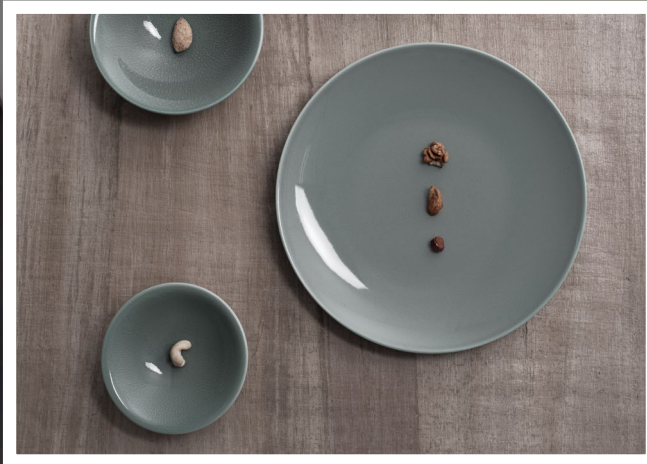


ASTERA - TABLEWARE



astera



CONTENTS

Javeil Collection	72
Airain Collection	73
Peel Collection	74
Style Collection	75
Brasserie Collection	78
The Quality of Astera	79
Product Care	80



Stunning, pure white tableware.

A rare true hard paste porcelain.

**Offering purity, finesse and strength
at amazing value.**

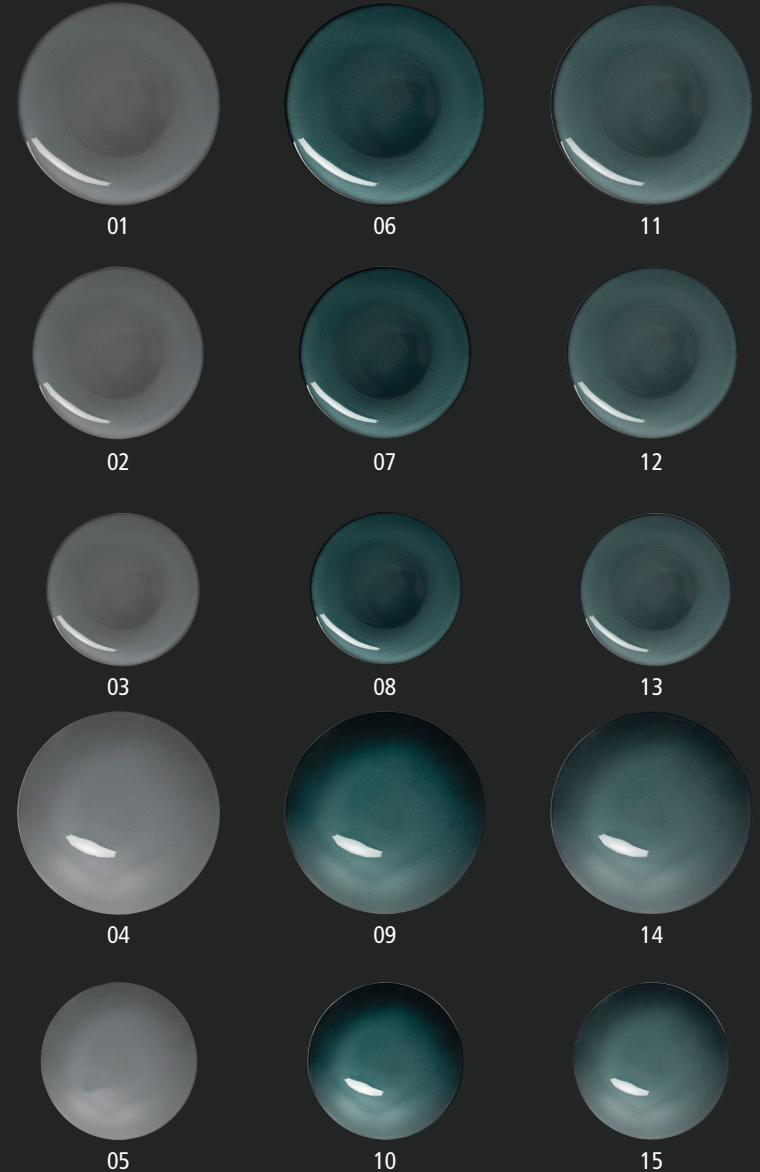
**Take dining to the next level of fine
with the Astera collection.**

JAVEIL COLLECTION



COUPE PLATES

- | | | | |
|----|----------------|-------------------------------------|------------|
| 01 | BP860GY | Coupe Plate 11", 28cm - Ash Grey | Case Qty 6 |
| 02 | BP861GY | Coupe Plate 9", 25cm - Ash Grey | Case Qty 6 |
| 03 | BP862GY | Coupe Plate 8", 22cm - Ash Grey | Case Qty 6 |
| 04 | BQ044GY | Coupe Bowl 11", 28cm - Ash Grey | Case Qty 4 |
| 05 | BQ045GY | Coupe Bowl 10", 25cm - Ash Grey | Case Qty 6 |
| 06 | BP860GN | Coupe Plate 11", 28cm - Sea Green | Case Qty 6 |
| 07 | BP861GN | Coupe Plate 9", 25cm - Sea Green | Case Qty 6 |
| 08 | BP862GN | Coupe Plate 8", 22cm - Sea Green | Case Qty 6 |
| 09 | BQ044GN | Coupe Bowl 11", 28cm - Sea Green | Case Qty 4 |
| 10 | BQ045GN | Coupe Bowl 10", 25cm - Sea Green | Case Qty 6 |
| 11 | BP860TE | Coupe Plate 11", 28cm - Velvet Teal | Case Qty 6 |
| 12 | BP861TE | Coupe Plate 9", 25cm - Velvet Teal | Case Qty 6 |
| 13 | BP862TE | Coupe Plate 8", 22cm - Velvet Teal | Case Qty 6 |
| 14 | BQ044TE | Coupe Bowl 11", 28cm - Velvet Teal | Case Qty 4 |
| 15 | BQ045TE | Coupe Bowl 10", 25cm - Velvet Teal | Case Qty 6 |



AIRAIN COLLECTION



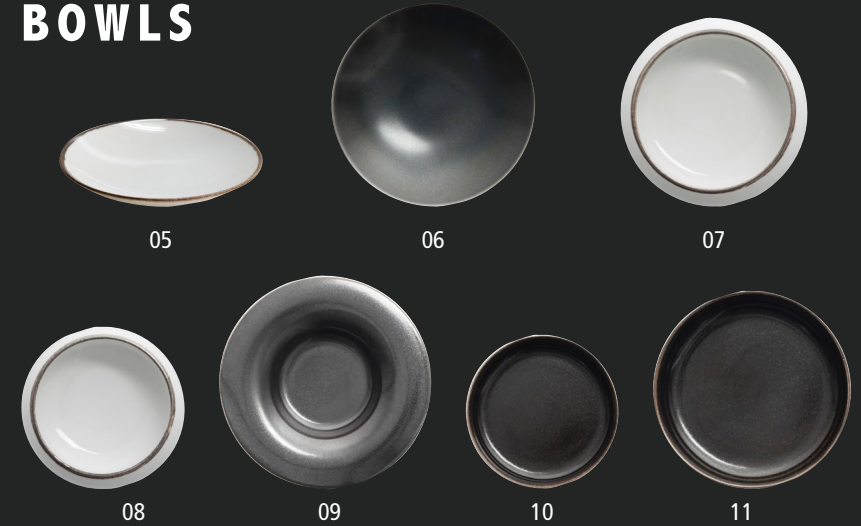
COUPE PLATES



- 01 **BP869** Coupe Plate 11", 28cm - Metallic Case Qty 6
- 02 **BP870** Coupe Plate 9 1/8", 25cm - Metallic Case Qty 6
- 03 **BP871** Coupe Plate 8 1/8", 22cm - Metallic Case Qty 6
- 04 **BP863** Coupe Plate 5 1/10", 15cm - Bronze Case Qty 24



BOWLS



- 05 **BP872** Coupe Bowl 7 1/2", 20cm - Metallic Case Qty 6
- 06 **BP864** Coupe Bowl 9 1/2", 25cm - Bronze Case Qty 6
- 07 **BP873** Organic Bowl 6 1/8", 16cm - Metallic Case Qty 6
- 08 **BP874** Organic Bowl 5 1/8", 13cm - Metallic Case Qty 6
- 09 **BP868** Gourmet Bowl 10 1/4", 26cm - Bronze Case Qty 6
- 10 **BP867** Side Bowl 5 1/16", 15cm - Bronze Case Qty 6
- 11 **BP866** Side Bowl 4", 12cm - Bronze Case Qty 12

JUG



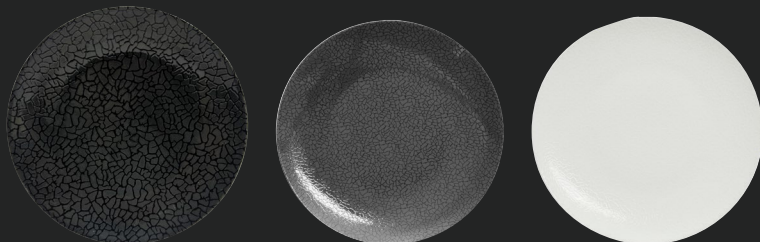
- 12 **BP865** Jug 4 1/2oz, 12.5cl - Bronze Case Qty 6



PEEL COLLECTION



PLATES



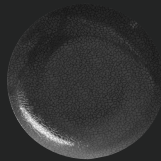
01

02

03



04



05

- | | | | |
|----|--------------|---|------------|
| 01 | BP850 | Coupe Plate 12 $\frac{1}{2}$ " , 31cm - Black | Case Qty 6 |
| 02 | BP853 | Coupe Flat Plate 11" , 28cm - Slate | Case Qty 6 |
| 03 | BP856 | Coupe Flat Plate 11" , 28cm - White | Case Qty 6 |
| 04 | BP857 | Coupe Flat Plate 9 $\frac{1}{2}$ " , 25cm - White | Case Qty 6 |
| 05 | BP851 | Coupe Plate 5 $\frac{1}{10}$ " , 15cm - Black | Case Qty 6 |



BOWLS



06



07

- | | | | |
|----|--------------|---|------------|
| 06 | BP854 | Coupe Bowl 9 $\frac{1}{2}$ " , 25cm - Slate | Case Qty 6 |
| 07 | BP858 | Coupe Bowl 7 $\frac{1}{2}$ " , 20cm - White | Case Qty 6 |

PLATTERS



08

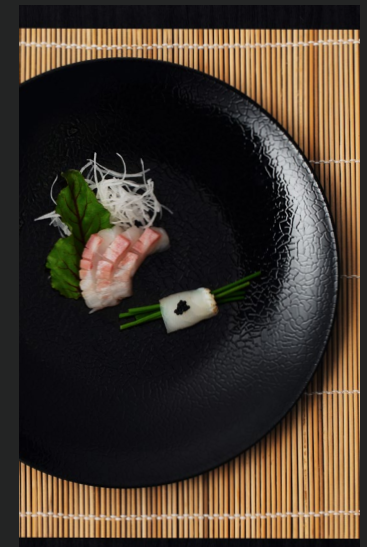


09



10

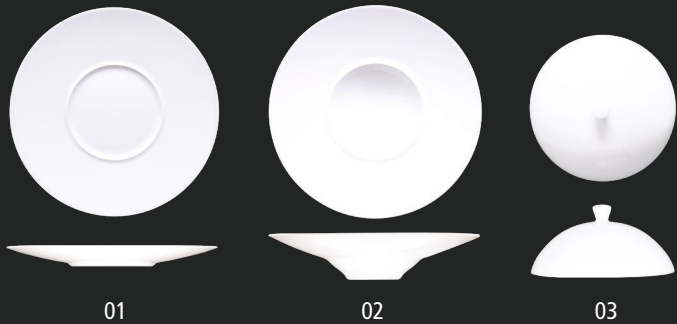
- | | | | |
|----|--------------|---|------------|
| 08 | BP852 | Plate 13 $\frac{1}{4}$ x 5 $\frac{1}{10}$ " , 35 x 15cm - Black | Case Qty 6 |
| 09 | BP855 | Platter 14 $\frac{1}{10}$ x 8 $\frac{1}{5}$ " , 38 x 22cm - Slate | Case Qty 6 |
| 10 | BP859 | Flat Platter 11" , 28cm - White | Case Qty 6 |



STYLE COLLECTION

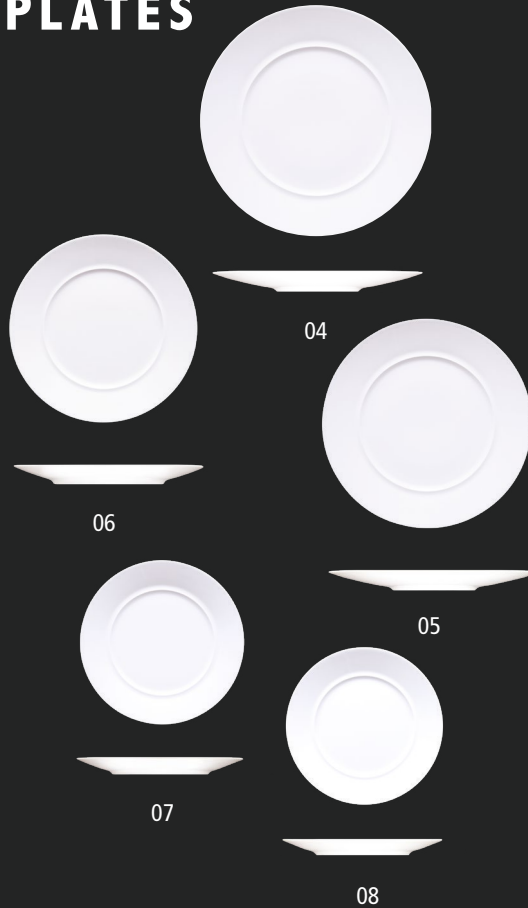


WIDE RIM PLATES & BOWLS



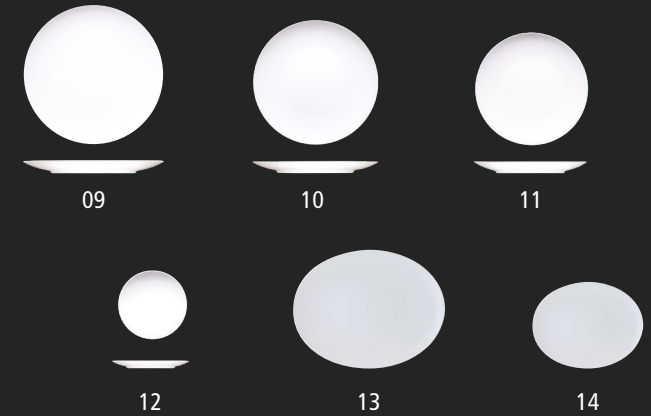
- | | | | |
|----|---------------|---|------------|
| 01 | BI2196 | Wide Rimmed Plate 11", 28cm | Case Qty 6 |
| 01 | BI297 | Wide Rimmed Plate 8 $\frac{2}{3}$ ", 22cm | Case Qty 6 |
| 02 | BI294 | Wide Rimmed Bowl 11", 28cm | Case Qty 6 |
| 02 | BI295 | Wide Rimmed Bowl 8 $\frac{2}{3}$ ", 22cm | Case Qty 6 |
| 03 | BI298 | Cloche to fit BI296 & BI294 | Case Qty 1 |
| 03 | BI299 | Cloche to fit BI297 & BI295 | Case Qty 1 |

PLATES



- | | | | |
|----|--------------|--------------------------------|-------------|
| 04 | BI287 | Plate 12 $\frac{1}{2}$ ", 31cm | Case Qty 4 |
| 05 | BI288 | Plate 11", 28cm | Case Qty 6 |
| 06 | BI289 | Plate 9 $\frac{1}{2}$ ", 25cm | Case Qty 6 |
| 07 | BI290 | Plate 8 $\frac{1}{2}$ ", 22cm | Case Qty 6 |
| 08 | BI291 | Plate 6 $\frac{1}{2}$ ", 17cm | Case Qty 12 |

COUPE PLATES



- | | | | |
|----|---------------|--------------------------------------|-------------|
| 09 | BI313 | Coupe Plate 12 $\frac{1}{2}$ ", 31cm | Case Qty 4 |
| 10 | BI314 | Coupe Plate 11", 28cm | Case Qty 6 |
| 11 | BI315 | Coupe Plate 9 $\frac{1}{2}$ ", 25cm | Case Qty 6 |
| 12 | BI316 | Coupe Plate 6 $\frac{1}{2}$ ", 17cm | Case Qty 12 |
| 13 | AR5041 | Oval Coupe Plate 13", 33cm | Case Qty 4 |
| 14 | AR5042 | Oval Coupe Plate 9", 23cm | Case Qty 6 |



STYLE COLLECTION

BOWLS



- | | | | |
|----|---------------|---------------------------------------|-------------|
| 15 | BI292 | Rimmed Bowl 11 $\frac{1}{2}$ " , 30cm | Case Qty 4 |
| 16 | BI293 | Rimmed Bowl 9 $\frac{1}{2}$ " , 25cm | Case Qty 4 |
| 17 | AR5036 | Side Bowl 6 $\frac{1}{2}$ " , 16cm | Case Qty 6 |
| 18 | AR5037 | Side Bowl 5 $\frac{1}{2}$ " , 14cm | Case Qty 6 |
| 19 | BQ063 | Side Bowl 4 $\frac{1}{2}$ " , 12cm | Case Qty 12 |
| 20 | BI303 | Handled Soup Bowl 10oz, 30cl | Case Qty 1 |
| 21 | BI306* | Round Soup Stand 7" , 18cm | Case Qty 6 |

BEVERAGE & ACCESSORIES



- | | | | |
|----|---------------|---------------------------------------|-------------|
| 22 | BL903 | Cup 9 $\frac{1}{2}$ oz, 27cl | Case Qty 6 |
| 23 | BI304 | Cup 7oz, 20cl | Case Qty 12 |
| 24 | BI305 | Cup 3oz, 9cl | Case Qty 12 |
| 25 | BI309 | Mug 10oz, 30cl | Case Qty 6 |
| 26 | BI307* | Large Saucer 6 $\frac{1}{2}$ " , 16cm | Case Qty 24 |
| 27 | BI308* | Small Saucer 5 $\frac{1}{2}$ " , 14cm | Case Qty 24 |
| 28 | BI312 | Teapot 14oz, 40cl | Case Qty 2 |
| 29 | AR5035 | Jug / Sauce Boat 9oz, 25cl | Case Qty 6 |
| 29 | BI311 | Jug / Sauce Boat 5oz, 15cl | Case Qty 6 |
| 30 | DL802 | Salt Pot | Case Qty 12 |
| 30 | DL803 | Pepper Pot | Case Qty 6 |



*BI307 FITS CUP BI304, BI308 FITS CUP BI305

STYLE COLLECTION



COUPE BOWLS



33

33 **B1300** Coupe Bowl 9 $\frac{1}{8}$ " , 25cm



34

34 **B1301** Coupe Bowl 7 $\frac{1}{8}$ " , 20cm Case Qty 6



BOWLS



31

31 **BK022** Square Side Bowl 5 $\frac{1}{2}$ " , 14cm Case Qty 12



32

32 **BK023** Round Side Bowl 5 $\frac{9}{10}$ " , 15cm Case Qty 6

SIGNATURE PIECES



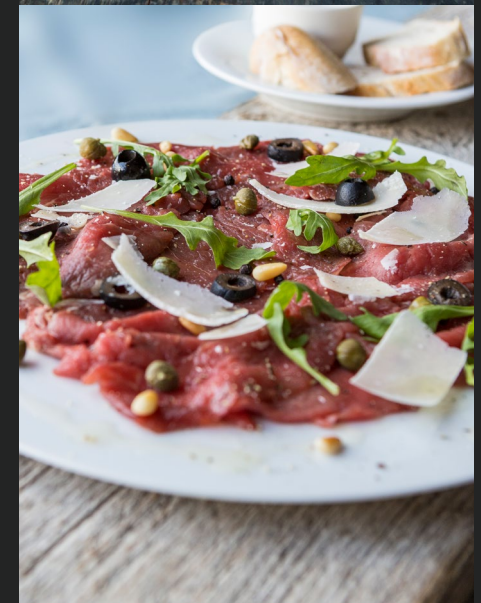
35

35 **BK019*** Flat Platter 11" , 29cm Case Qty 6



36

36 **BK021** Burger Platter 12 $\frac{1}{8}$ " x 5 $\frac{1}{10}$ " , 32 x 15cm Case Qty 6



*BK019 FITS
RAFTERS PLATTER
DK271 (page 242)

BRASSERIE COLLECTION



01

02

03



04

05

PLATES

- | | | | |
|----|--------------|---------------------------------|-------------|
| 01 | BI318 | Plate 12 $\frac{1}{2}$ " , 31cm | Case Qty 4 |
| 02 | BI319 | Plate 10 $\frac{1}{2}$ " , 27cm | Case Qty 6 |
| 03 | BI320 | Plate 9 $\frac{1}{2}$ " , 24cm | Case Qty 6 |
| 04 | BI321 | Plate 8 $\frac{1}{2}$ " , 21cm | Case Qty 6 |
| 05 | BI322 | Plate 6" , 15cm | Case Qty 24 |

BOWLS



06

07

- | | | | |
|----|--------------|---------------------------------------|------------|
| 06 | BI323 | Rimmed Bowl 11 $\frac{1}{2}$ " , 29cm | Case Qty 4 |
| 07 | BI324 | Rimmed Bowl 9" , 23cm | Case Qty 6 |

BEVERAGE & ACCESSORIES



08

09

10



11

12



13

14

15

- | | | | |
|----|---------------|---------------------------------------|-------------|
| 08 | BI327 | Stacking Cup 7 $\frac{1}{2}$ oz, 22cl | Case Qty 12 |
| 09 | BI328 | Stacking Cup 3oz, 9cl | Case Qty 12 |
| 10 | BI329* | Large Saucer 6 $\frac{1}{3}$ " , 15cm | Case Qty 24 |
| 11 | BI330* | Small Saucer 5" , 13cm | Case Qty 24 |
| 12 | BI310 | Covered Sugar Bowl 7oz, 20cl | Case Qty 6 |
| 13 | BI325 | Jug 7oz, 20cl | Case Qty 6 |
| 14 | BI326 | Jug 3 $\frac{1}{2}$ oz, 10cl | Case Qty 6 |
| 15 | BI317 | Butter Block 2oz, 6cl | Case Qty 12 |

*BI329 FITS CUP BI327, BI330 FITS CUP BI328

THE QUALITY OF ASTERA

CREATING A TRUE WHITE PORCELAIN

There is a reason why hard paste porcelain is called 'True Porcelain'. True Porcelain is only made by real craftsmen, those who have the ability to combine the science with the art.

Often imitated; true porcelain is the ultimate ceramic material; more dense, harder, stronger, and more durable. From its Chinese origins, through the master potters of France and Germany it has been the tableware of choice for those who can afford real luxury.

A tour across the finest restaurants of the world will, time after time, show wonderful gastronomy displayed to its very best advantage on true porcelain.

The finest, purest materials, the highest firing temperatures, minute control of atmospheric conditions are what make true porcelain a rare commodity. The end result is incredible finesse, the purest white and the ability to produce stunning shapes.

MATERIALS

- Astera uses only the purest China Clays and China Stone
- Free from artificial fluxes and fillers
- High firing temperatures to fuse the clays into a dense, highly durable, pure white porcelain
- Highest grade alumina to bring a unique level of durability
- Finest European material along with a level of quality testing and control rare in the tableware industry
- High quality, lead free glaze finish

MANUFACTURING

- Manufactured using all the latest equipment and kilns
- Firing: First Firing (Biscuit/Bisque) at 1000°C to get a dry, porous blank ready for glazing. Second Firing (Glost/ Grand Feu) at over 1400°C. Exact control of the oxygen content in the glost kiln is crucial to developing the colour and vitrifying the porcelain perfectly
- Forming: Astera utilises the latest techniques – isostatic pressing, high pressure casting, new generation cup/mug forming machines
- Glazing: The latest German automated glaze dipping cell
- Finishing: Astera is foot polished using a diamond polishing machine for a glassy finish

QUALITY MANAGEMENT

- Exclusively manufactured in a world-class facility that has been awarded ISO9001 for quality management
- The factory utilises the latest forming, finishing and firing technology to guarantee consistency, efficiency and effective environmental control throughout every process
- Continuous and rigorous testing at every stage throughout the process
- 100% inspections by staff dedicated to the elimination of faults
- Holding certification for Corporate Social Responsibility to SA8000, the care and well being of the employees & their families is of the utmost importance
- The factory also holds certification for Environmental Management ISO14000

PRODUCT CARE - HOW TO GET THE BEST FROM ASTERA TABLEWARE

STACKING

- Stack items vertically
- Avoid one item sliding or rubbing against another

CHIPPING

The vast majority of Astera (all plates, bowls, oval dishes, saucers, cups and mugs) are covered by a lifetime edge chip warranty but it's important to follow these basic guidelines:

- Always handle with care – careless or rough handling causes breakages
- Never scrape the product against a bin or receptacle

IN THE DISHWASHER

- Rinse thoroughly after use, before loading into a dishwasher
- Wash separately from other items like glassware, cutlery and cooking equipment
- Follow the dishwasher manufacturer guidelines for type and amount of detergent to use
- Keep the dishwasher fully serviced and clean as per manufacturer guidelines
- If metal marks do appear on Astera items, clean with a porcelain cleanser. Check cutlery to ensure there no rough edges
- Wash metal surfaces with water & vinegar to remove any particles which could be transferred.



LIFETIME EDGE CHIP WARRANTY



MICROWAVE SAFE



DISHWASHER SAFE



HEAT RETENTION



THERMAL SHOCK RESISTANCE



ABRASION & METAL MARKING RESISTANCE



STACKABILITY



LEAD AND CADMIUM FREE